

Project Narrative for 125-127-129 W Main Street

The three properties above will each receive a new façade design after the removal of the colonnade in front of the properties.

125 will receive a new cornice at the parapet of the property to replicate the use of this historic feature once found in downtown Mesa. A new EIFS façade will be placed over the existing stucco. The stone “Aztec” features placed there in the 1960s will be cleaned and maintained. A new suspended canopy and new storefront will be added. An exterior seating area is planned for.

127 will be provided with a new cornice also. The existing stucco front will be removed and existing brick cleaned of the paint. A new suspended canvas canopy will be added with fans along with an outdoor dining area on the area in front of the property. New planters will also be provided.

129 will add a new extended front canopy and aged wood façade. The existing signage original to the building since the late 50s will be updated and lighted again. It will remain in the same location. No changes will be made to the existing storefront. A new pediment at the front façade will replicate the look found in the section of downtown from the 1890s.

All storefronts will receive new lighting.

ARCHITECTURE.ART.PLANNING.HISTORIC PRESERVATION

1711 E. Brown Road      Mesa, AZ 85203      480.649.4450      Fax: 480.649.4450  
Email: [rlpeters@historicstreetscapes.com](mailto:rlpeters@historicstreetscapes.com)









# DOWNTOWN FACADE IMPROVMENT MAIN STREET - CITY OF MESA ARIZONA

CITY OF MESA PROJECT NO. CP0781  
HUD PROJECT NO. IDIS 752

## RESTORATION OF BUILDING FACADES 125, 127 & 129 WEST MAIN STREET, MESA ARIZONA 85201

### SHEET INDEX

<u>GENERAL</u>		
A 001	COVER SHEET	x OF x
<u>ARCHITECTURAL</u>		
A201	LAYOUT SHEET	x OF x
<u>PLUMBING</u>		
P101	PLUMBING PLAN	x OF x

### CONSULTANTS

#### ARCHITECT

HISTORICSTREETSCAPES PLLC  
CONTACT: RON PETERS AIA, AICP  
1711 E. BROWN RD  
MESA, AZ 85203  
PHONE (602) 309-3524

#### STRUCTURAL ENGINEERS

CARUSO, TURLEY, SCOTT INC.  
CONTACT: ANTHONY WULFERS, SE, MSCE  
1215 W. RIO SALADO PKWY. STE. 200  
TEMPE, AZ 85281  
PHONE: 480-774-1739

#### ELECTRICAL ENGINEERS

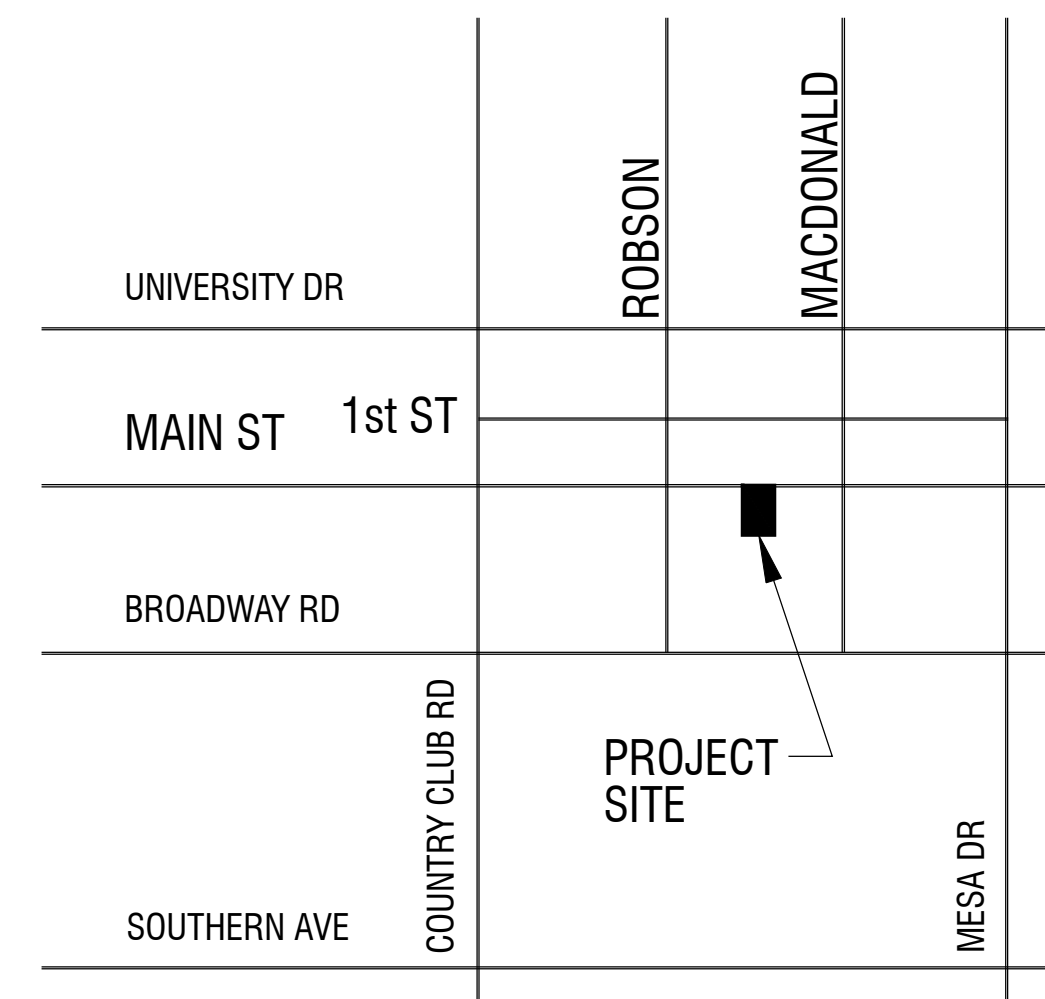
SYSTEMS APPLIED ENGINEERING  
CONTACT: HAMID FARHADI, PE  
3322 S. MILL AVE.  
TEMPE, AZ 85282  
PHONE: 480-968-3070

#### FIRE PROTECTION ENGINEERS

INFO REQUIRED

### PROJECT SCOPE

THIS PROJECT ENTAILS THE RENOVATION OF 3 HISTORIC STOREFRONT FACADES IN DOWNTOWN MESA ARIZONA. THE CONTRACTOR SHALL TAKE CARE WHERE POSSIBLE TO PROTECT EXISTING HISTORIC CHARACTER, DEFINING FEATURES OF THE BUILDINGS DURING CONSTRUCTION, AND DEMOLITION. ANY DETERMINATION OF POTENTIALLY HISTORIC FABRICS, THEY FIRST SHOULD BE PROTECTED AND THE ARCHITECT CONTACTED FOR ANY DECISIONS FOR PRESERVATION, RESTORATION OR REMOVAL. THE OWNER SHALL HAVE FIRST REFUSAL OF ANY MATERIALS BEING REMOVED FROM



LOCATION MAP

### CITY OF MESA GENERAL NOTES:

1. WORK AND MATERIALS SHALL CONFORM TO THE MOST CURRENT UNIFORM STANDARD SPECIFICATIONS AND DETAILS FOR PUBLIC WORKS CONSTRUCTION AS FURNISHED BY THE MARICOPA ASSOCIATION OF GOVERNMENTS AND AS AMENDED BY THE CITY OF MESA. WORK AND MATERIALS NOT IN CONFORMANCE WITH THESE AMENDED SPECIFICATIONS AND DETAILS ARE SUBJECT TO REMOVAL AND REPLACEMENT AT THE CONTRACTOR'S EXPENSE.
2. CONTRACTOR TO OBTAIN ANY PERMITS REQUIRED UNLESS OTHERWISE INDICATED. RELOCATIONS, AND REMOVALS BY OTHERS.
3. INSPECTIONS SHALL BE BY THE CITY OF MESA. THE CONTRACTOR SHALL NOTIFY THE CITY OF MESA INSPECTION DEPARTMENT AT LEAST 48-HOURS IN ADVANCE OF ANY CONSTRUCTION.
4. THE JOB SITE, AT THE COMPLETION OF THE CONSTRUCTION, SHALL BE CLEANED OF ANY DEBRIS OR SPOIL RESULTING FROM THE CONSTRUCTION.
5. EQUIPMENT AND MATERIALS NOT SHOWN OR SPECIFIED ON THE PLANS OR IN THE SPECIFICATIONS BUT ARE REQUIRED TO COMPLETE THIS INSTALLATION, SHALL BE SUPPLIED BY THE CONTRACTOR AS PART OF THIS CONTRACT WORK.
6. IT WILL BE THE CONTRACTOR'S RESPONSIBILITY TO PROVIDE ALL NECESSARY FITTINGS AND ADAPTERS REQUIRED TO CONNECT DIFFERENT TYPES OF WATER LINE MATERIAL.
7. CONTRACTOR TO ARRANGE SPRINKLER SYSTEM SHUTDOWN DURING CONSTRUCTION. CONTACT ENGINEERING INSPECTOR.
8. IT IS THE CONTRACTORS RESPONSIBILITY TO INSPECT THE JOB SITE TO BECOME FAMILIAR WITH ALL EXISTING CONDITIONS THAT COULD EFFECT THE INSTALLATION OF ANY WORK SET FORTH IN THESE PLANS PRIOR TO SUBMITTING A BID. THERE WILL BE A PRE-BID WALK THRU.
9. MATERIALS REQUIRED SHALL BE OF A GRADE AND QUALITY CONSISTENT WITH THE INTENDED USE AS APPROVED BY THE ENGINEER.
10. THE CONTRACTOR SHALL BE RESPONSIBLE FOR VERIFYING THE EXISTENCE AND LOCATION OF ANY LINES THAT MAY BE NEEDED OR AVOIDED IN THE DEMOLITION/REMODELING PHASES IN ADVANCE OF ANY CONSTRUCTION. THE CITY OF MESA DOES NOT GUARANTEE ANY LOCATIONS REFERENCED.
11. THE CONTRACTOR IS ADVISED THAT DAMAGE CAUSED BY CONTRACTOR SHALL BE REPAIRED BY THE CONTRACTOR, AT THE CONTRACTOR'S EXPENSE.
12. INSPECTION SHALL BE EXECUTED BY THE BUILDING INSPECTIONS DEPT. BY THE BUILDING MAINTENANCE DEPT. BY THE FIRE DEPT. AND BY THE ENGINEER (NOTIFY 24 HOURS IN ADVANCE).
13. THE CONTRACTOR IS RESPONSIBLE FOR THE REMOVAL AND DISPOSAL OF ANY DEBRIS RESULTING FROM THE DEMOLITION AND CONSTRUCTION. AT NO TIME SHALL ANY OF THIS MATERIAL OBSTRUCT THE NORMAL OPERATION OF THE RESIDENT EMPLOYEES.
14. CONSTRUCTION MUST BE COORDINATED WITH AN ENGINEERING INSPECTOR TO ENSURE AN UNINTERRUPTED FLOW OF WORK STATION FUNCTION WHILE CONSTRUCTION IS UNDERWAY.
15. FINAL LOCATION OF CONSTRUCTION STAGING AREA TO BE DETERMINED AFTER BID.



125, 127 & 129 W. MAIN STREET CA. 1961

PHOTO COURTESY OF MESA MUSEUM OF NATURAL HISTORY

HISTORICSTREETSCAPES PLLC  
ARCHITECTURE-PLANNING-ART-HISTORIC PRESERVATION  
1711 EAST BROWN ROAD MESA, ARIZONA 85203  
OFFICE PHONE 480.646.4450 CELL 602.309.3524



ARCHITECT

ENGINEER

THE NILE THEATER  
BUILDING FACADE RENOVATIONS

MESA, ARIZONA 85201

105 W. MAIN STREET

PROJECT NO.	DATE
DESCRIPTION	REV.

PROJECT NO.

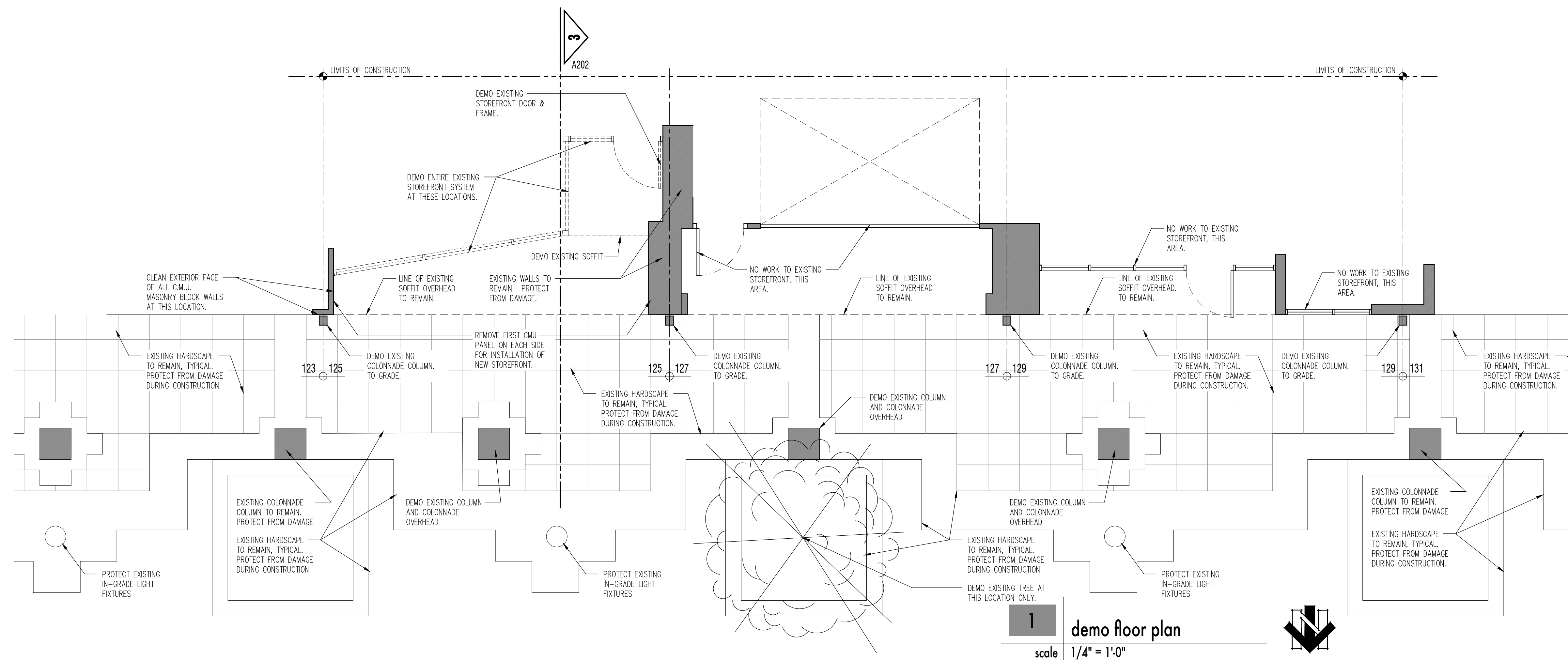
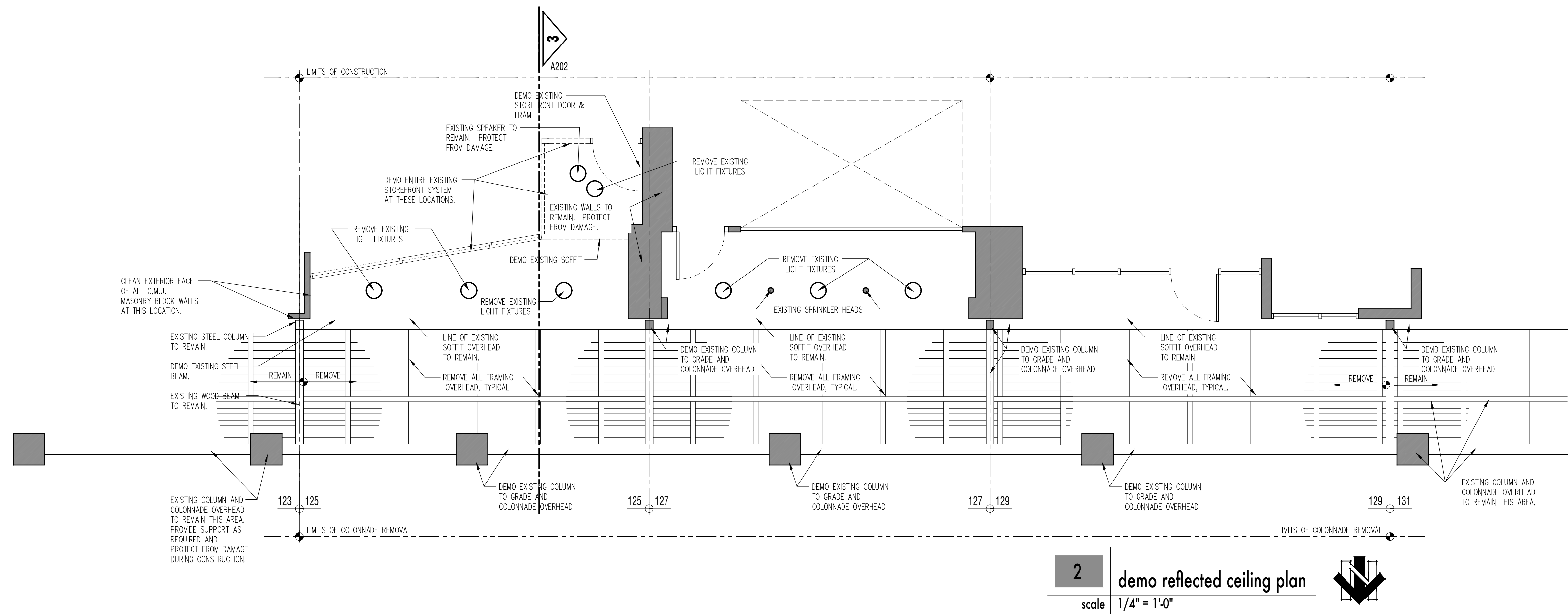
DATE  
JUNE 2017

DRAWING TITLE  
COVER SHEET

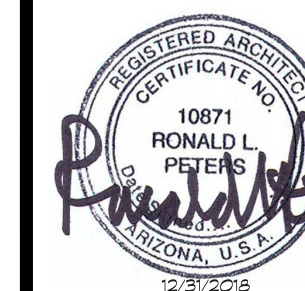
DRAWING NO.

A 001





**HISTORICSTREETSCAPES PLLC**  
ARCHITECTURE/PLANNING/ART/HISTORIC PRESERVATION  
1711 EAST BROWN ROAD MESA, ARIZONA 85203  
OFFICE PHONE 480.649.4450 CELL 602.309.3524



ARCHITECT

ENGINEER

**BUILDING 125, 127 & 129  
BUILDING FACADE RENOVATIONS**

BUILDING 125, 127 & 129  
BUILDING FACADE RENOVATIONS

125/127/129 W. MAIN STREET  
MESA, ARIZONA 85201

MESA, ARIZONA 85201

[illegible]

PROJECT NO.

DATE JUNE 2017

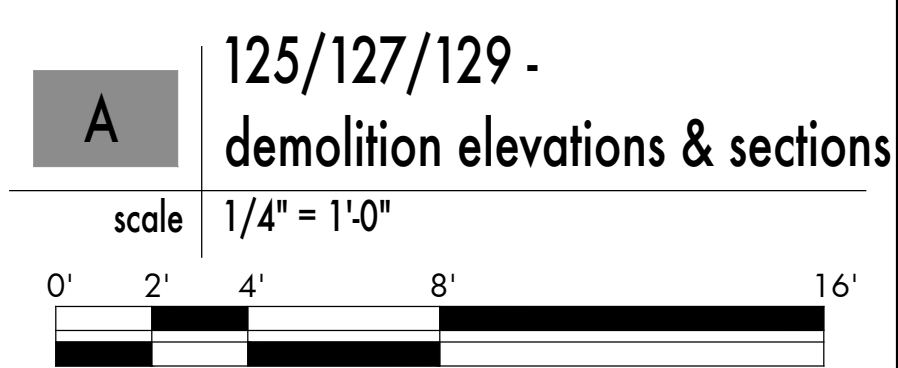
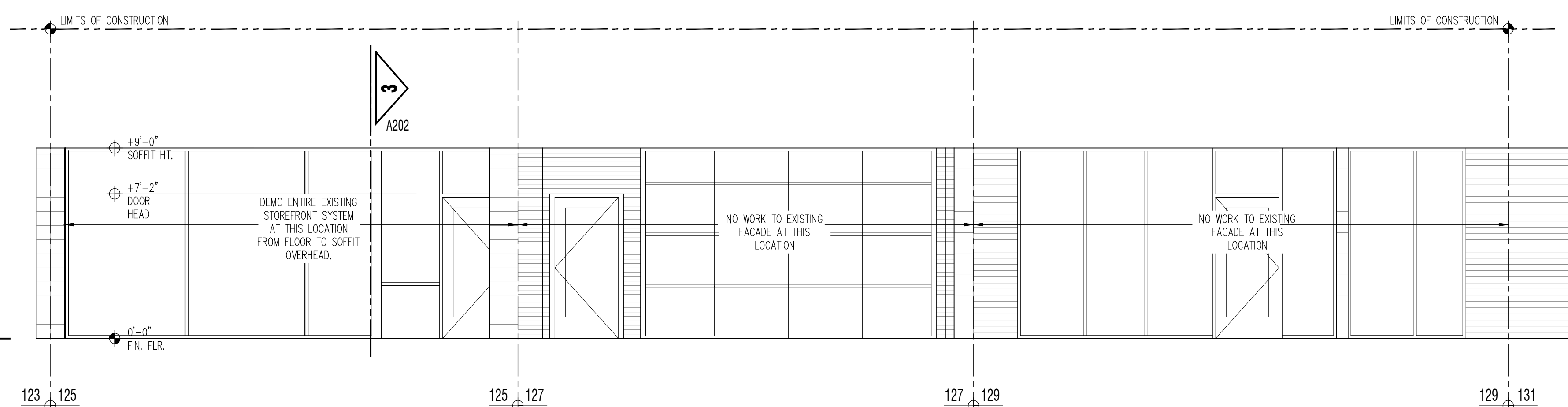
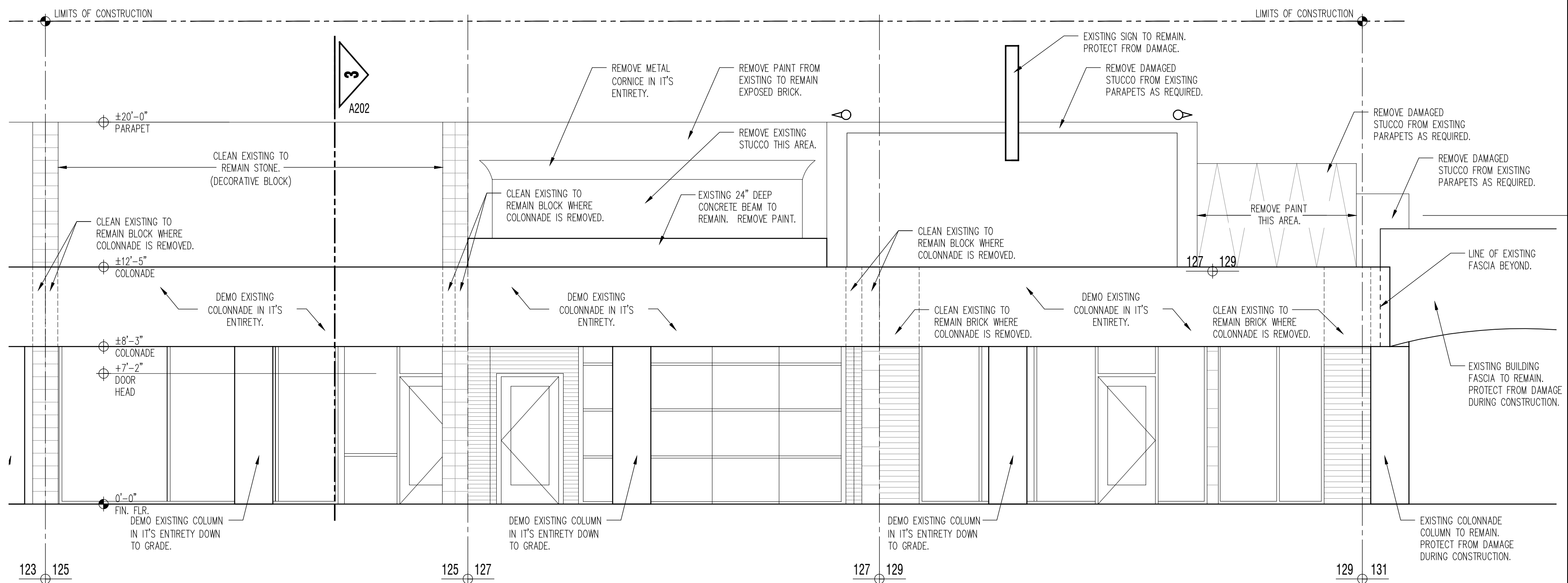
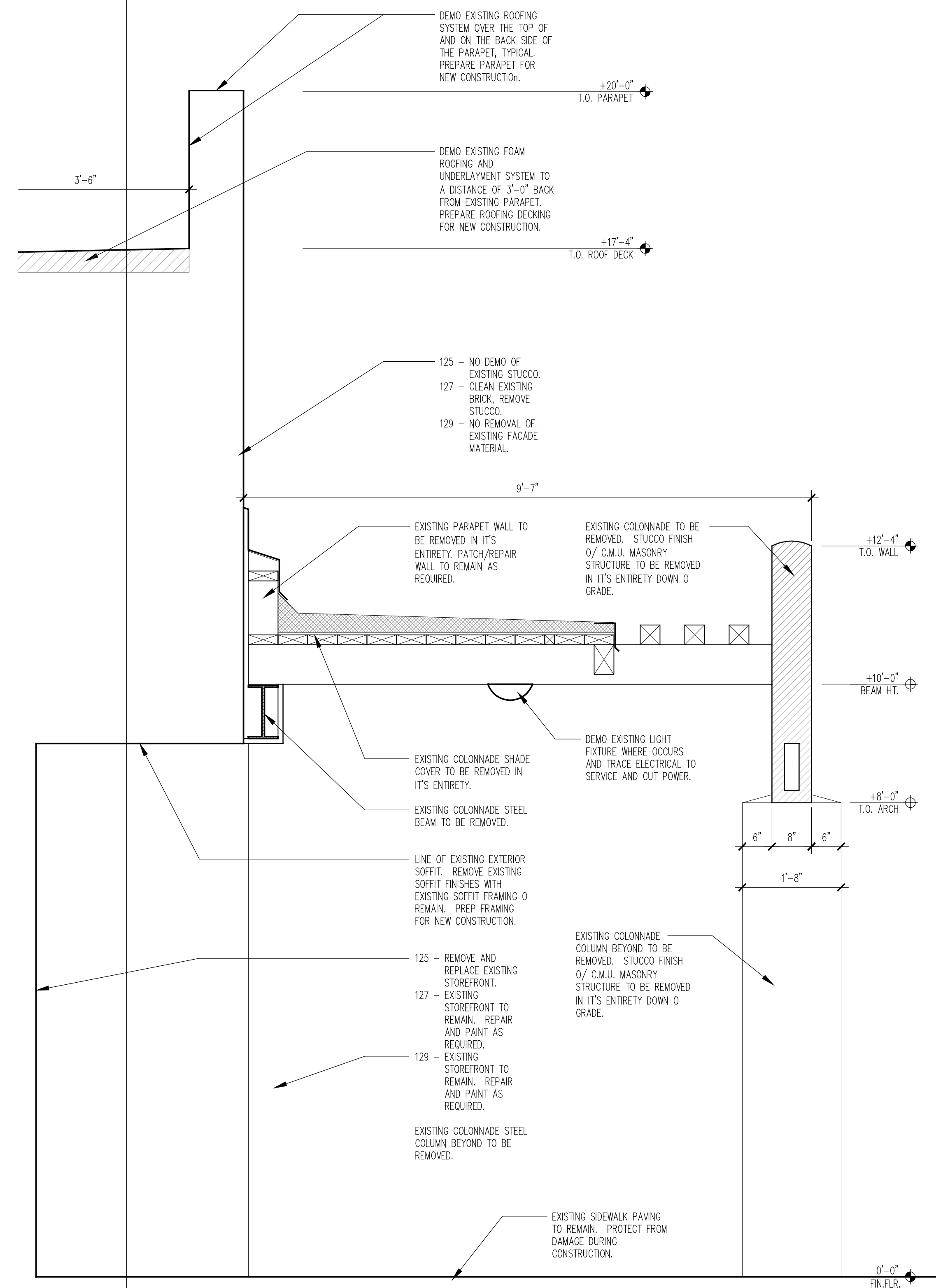
DRAWING TITLE

DEMOLITION  
PLANS

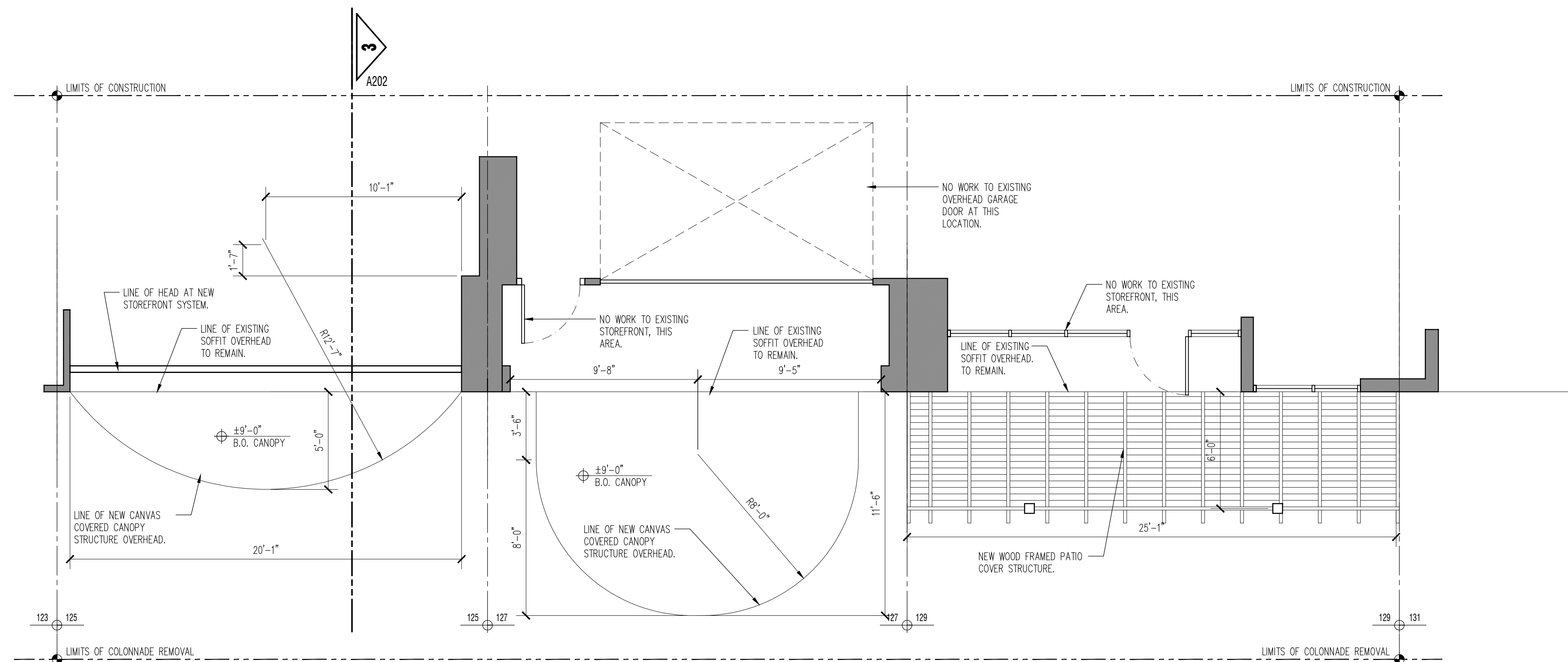
DRAWING NO.

A 201

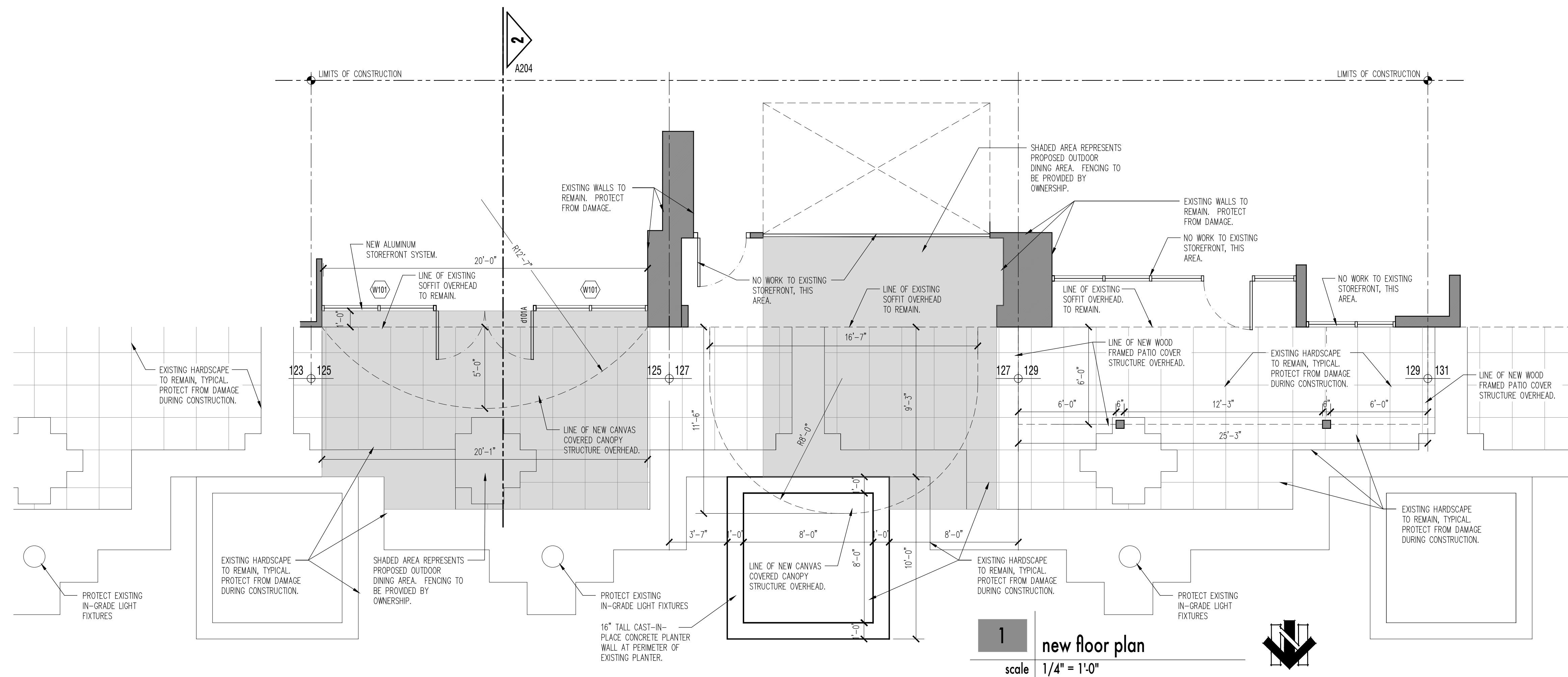
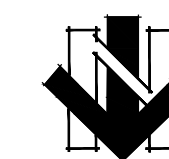
1712 - 125/127/129 MAIN STREET







2	new reflected ceiling plan
scale	$1/4" = 1'-0"$

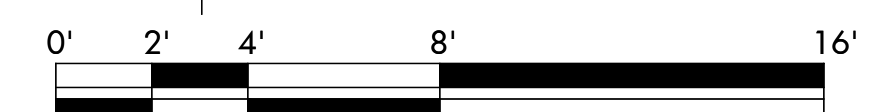


1	new floor plan
scale	$1/4" = 1'-0"$

scale	1/4" = 1'-0
-------	-------------

A	125/127/129 - renovation plans
---	--------------------------------

scale	1/4" = 1'-0"
-------	--------------

[illegible]

PROJECT NO.
DATE
JUNE 2017
DRAWING TITLE
RENOVATION PLANS
DRAWING NO.

A 203

HISTORIC PRESERVATION  
ARCHITECTURE PLANNING ART HISTORIC PRESERVATION  
1711 EAST BROWN ROAD MESA, ARIZONA 85203  
OFFICE PHONE 480.649.4450 CELL 602.309.3524

1711 EAST BROWN ROAD  
MESA, ARIZONA 85203  
OFFICE PHONE 480.649.4450  
CELL 602.309.3524

0  
1  
2  
3  
4  
5  
6  
7  
8  
9  
A  
B  
C  
D  
E  
F  
G  
H  
I  
J  
K  
L  
M  
N  
O  
P  
Q  
R  
S  
T  
U  
V  
W  
X  
Y  
Z

---

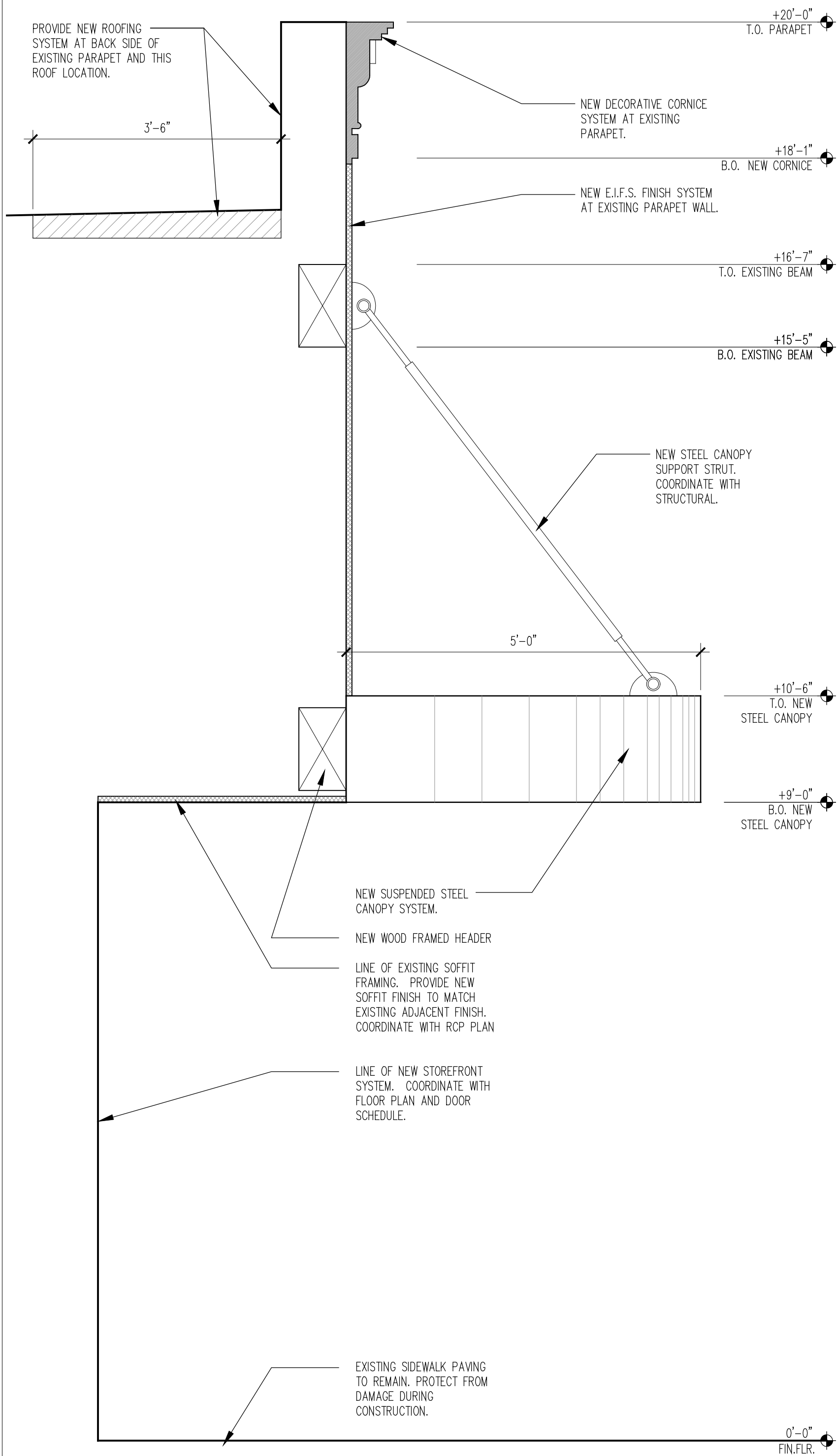
1

BUILDING 125, 127 & 129  
BUILDING FACADE RENOVATIONS

BUILDING FACADE RENOVATIONS

1125/12/125 W. 1125 N. ST. LEE  
1125/12/125 W. 1125 N. ST. LEE

1712 - 125/127/129 MAIN STREET



**2** new section @ unit 129 entry canopy  
scale 3/4" = 1'-0"

door schedule

DOOR NUMBER	ROOM NAME	PAIR	SIZE	MAT'L	FIN.	TYPE	THK.	FM. MAT'L	FM. FINISH	SWING	HEAD	JAMB	SILL	HDWR. SET	REMARKS
d101a	Entry Door	X	(2)3'-0"x7'-0"	Glass	N/A	A	3/4"	Alum.	Match Exist.	LHR/RHR	-	-	-	T.B.D.	-

window schedule

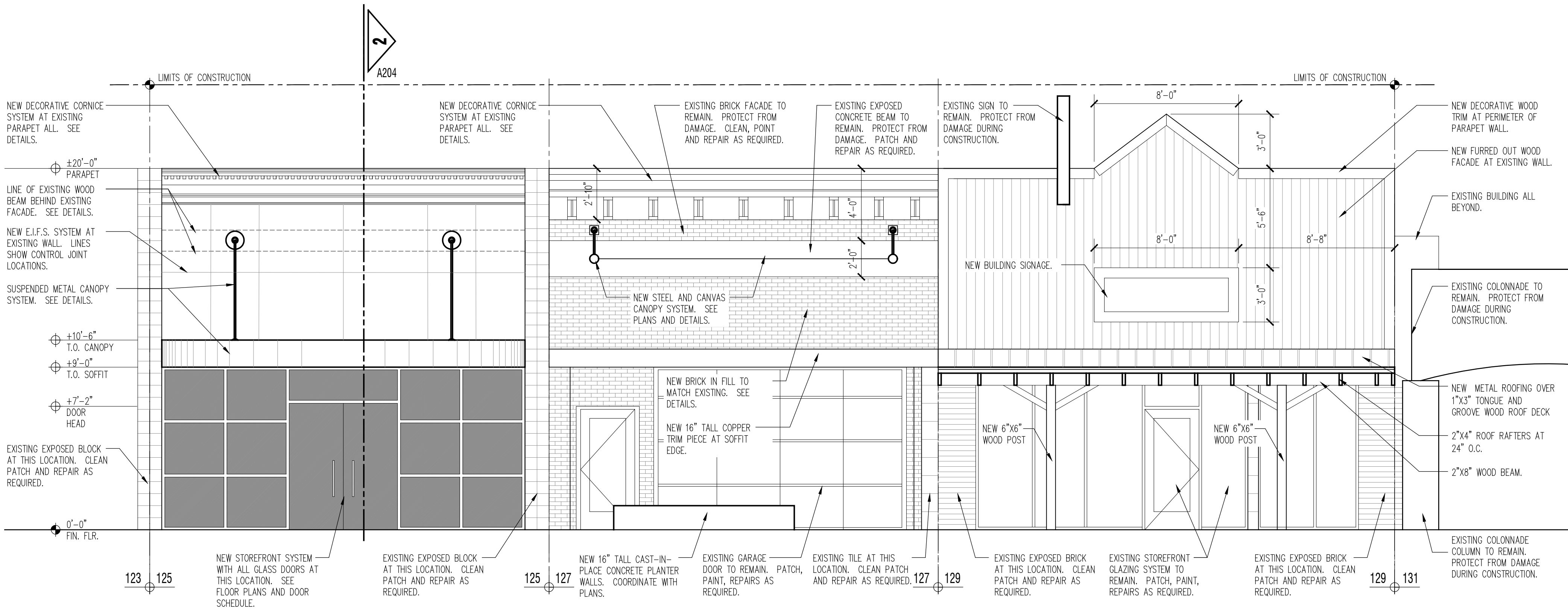
NUMBER	WINDOW SIZE (R.O.)	TYPE	MAT'L	FIN.	GLAZING - TYPE / COLOR	HEAD	JAMB	SILL	REMARKS
W101	20'-2" (w) x 9'-0" (h)	1	Alum.	Match Exist.	1" INSULATED, CLEAR EXT, CLEAR INT.	-	-	-	Alum. Storefront Frame System.

door & window finish / material key

ABBREVIATION:	DESCRIPTION:
ALUM	ALUMINUM – COLOR TO BE DETERMINED
HM	HOLLOW METAL
PAINT	PAINTED FINISH – COLOR TO BE DETERMINED
GLASS TYPE	PPG LOW-E SOLARBAN XL, (2) SOLARGREY + CLEAR

general notes:

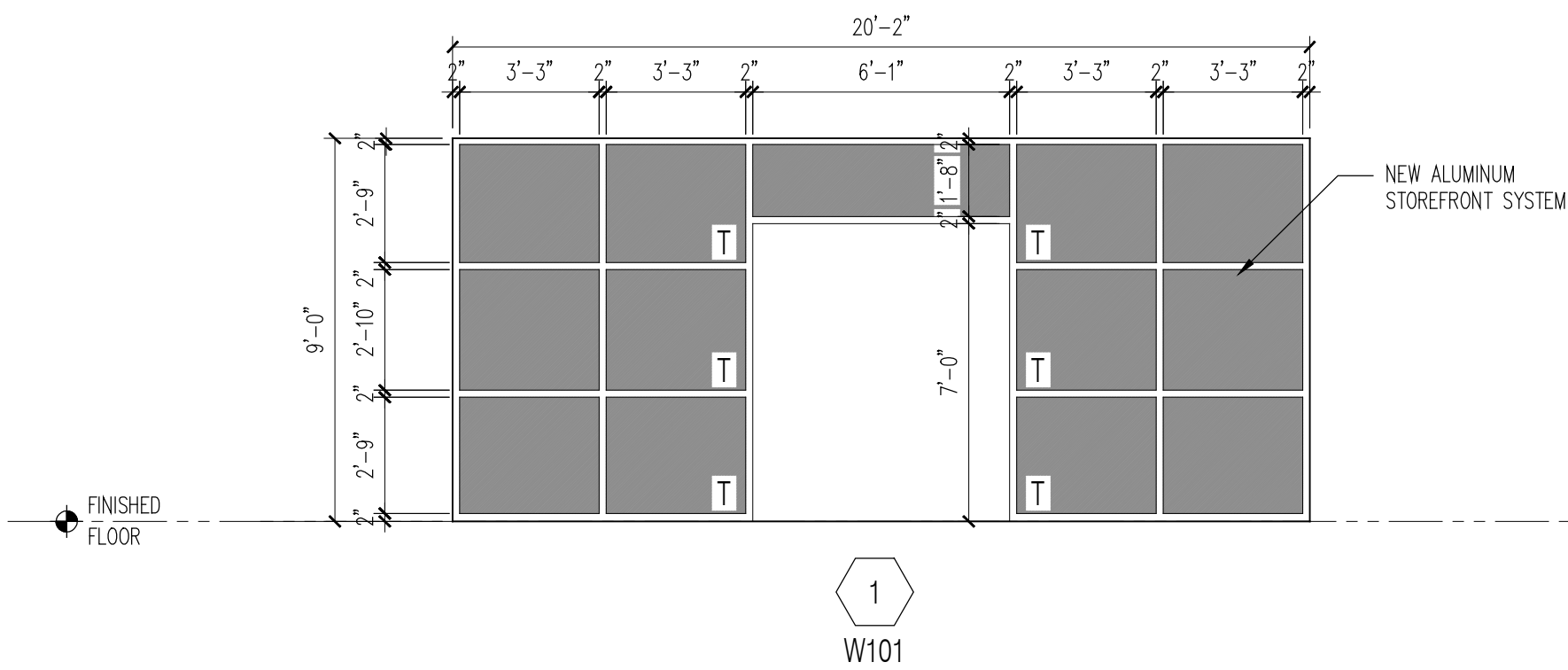
- ALL NEW DOORS AND WINDOWS SHALL MATCH EXISTING RESIDENCE. CONTRACTOR SHALL VERIFY PRODUCTS AND AVAILABILITY AND COORDINATE WITH OWNER.
- CONTRACTOR TO COORDINATE ACTUAL WINDOWS DOOR DIMENSIONS WITH FRAMING ROUGH OPENINGS.
- SEE OPERABLE WINDOWS ON WINDOW SCHEDULE AND FLOOR PLAN.
- DIMENSIONS TAKEN FROM INDICATED FINISH FLOOR.
- ELEVATIONS SHOWN FROM EXTERIOR.
- ALL WINDOWS ARE ALUMINUM CLAD WOOD WINDOWS. PROVIDE STAINED AND SEALED FINISH AT INTERIOR SIDE. EXTERIOR ALUMINUM COLOR TO BE DETERMINED. DOOR SWINGS PER PLAN.
- GLAZING WITHIN 24 INCHES OF SIDE OF SWINGING OR OPERABLE SLIDING DOOR TO BE SAFETY TYPE PER RESIDENTIAL CODE.
- CONTRACTOR TO COORDINATE HARDWARE PACKAGE WITH ARCHITECT PRIOR TO HARDWARE SUBMITTAL.
- ALL WOOD DOORS TO BE STAINED AND SEALED WITH VALHALLA WOOD PRESERVATIVES – "LIFETIME WOOD TREATMENT"
- ALL EXTERIOR GLAZING TO BE 1" INSULATED AND TINTED GLASS.
- ALL GLAZING LOCATED IN OPERABLE WINDOWS AND DOORS SHALL BE TEMPERED, SAFETY GLAZING PER LOCAL CODES.



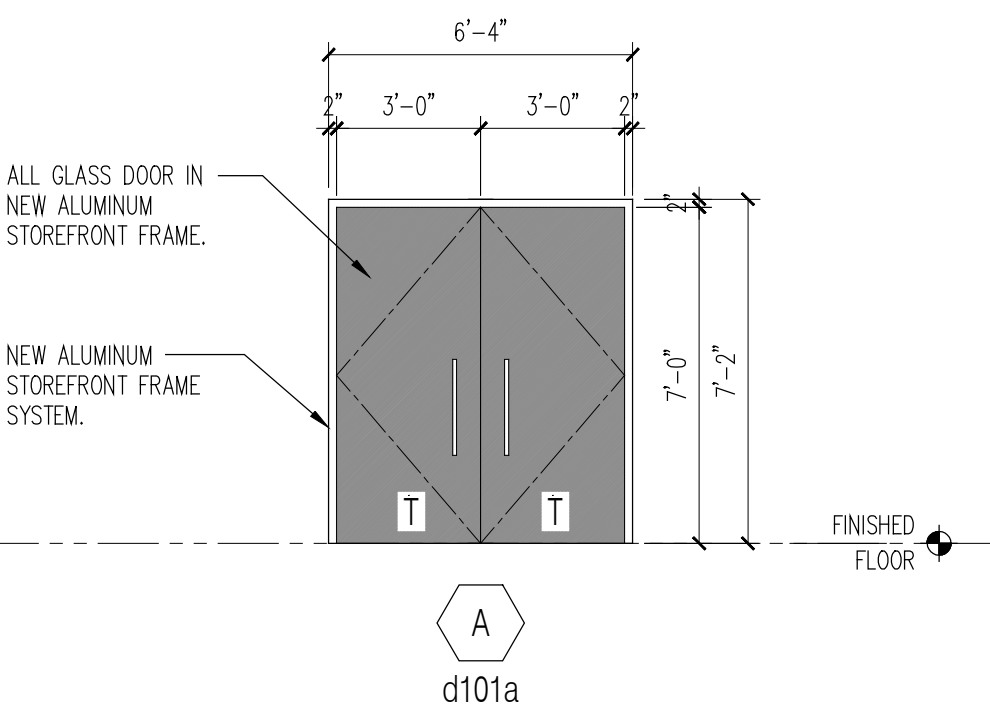
**1** overall new building elevation  
scale 1/4" = 1'-0"

**A** 125/127/129 - renovation elevations & sections  
scale 1/4" = 1'-0"

window elevations



door elevations





## FRP Classic™ Cornices

- ⇒ Overview
- ⇒ Designs
- ⇒ Photos
- ⇒ Warranty
- ⇒ Specifications
- ⇒ Installation
- ⇒ CAD Details

## Cornices

- ⇒ Fiberglass Cornices  
FRP Classic™
- ⇒ Polyurethane Cornices  
Architectural Urethane™

## All Products

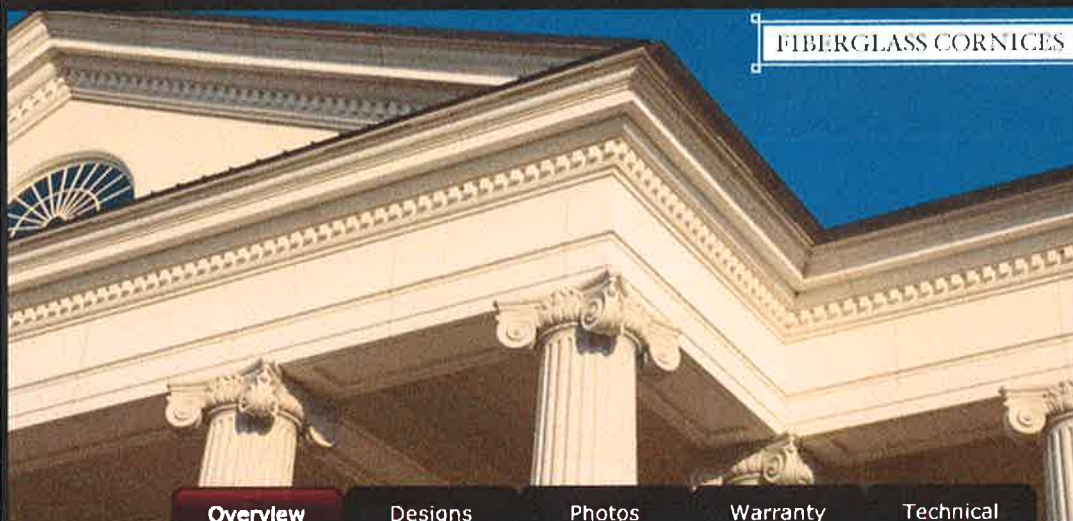
- ⇒ Columns
- ⇒ All Products
- ⇒ Balustrades
- ⇒ Balustrade Systems
- ⇒ Cornice
- ⇒ Cast Stone Elements
- ⇒ Architectural Millwork
- ⇒ Shutters
- ⇒ Pergolas & Arbors
- ⇒ Door Surrounds
- ⇒ Mouldings
- ⇒ Arches
- ⇒ Window Features
- ⇒ Louvers

**CUSTOM QUOTE**  
Always FREE, Always FAST

## Follow Us



## FIBERGLASS CORNICES



Overview

Designs

Photos

Warranty

Technical

## FRP Classic™ Fiberglass Cornice

FRP Classic fiberglass cornices and exterior architectural elements are crafted by our artisans with the finest fire rated materials. Our fiberglass cornices are light weight and simple to install, and are the ideal and economical way to create dramatic large multi-profile cornices. Inside and outside corners may also be provided with FRP Classic cornices to reduce installation costs and speed assembly.



### *Prefinished Exterior Cornices or Economical Paint Grade Cornices*

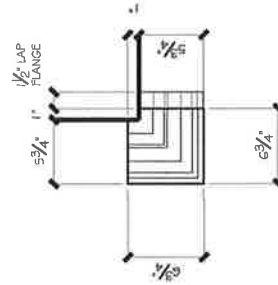
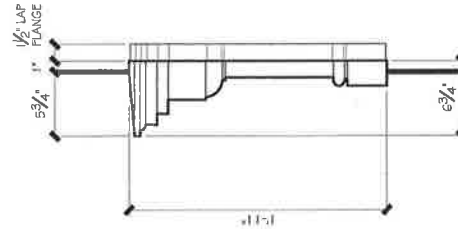
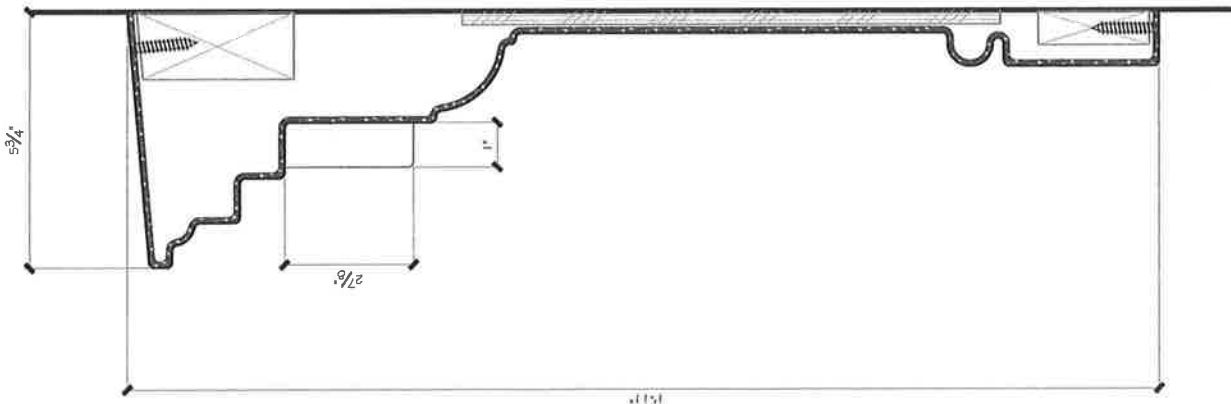
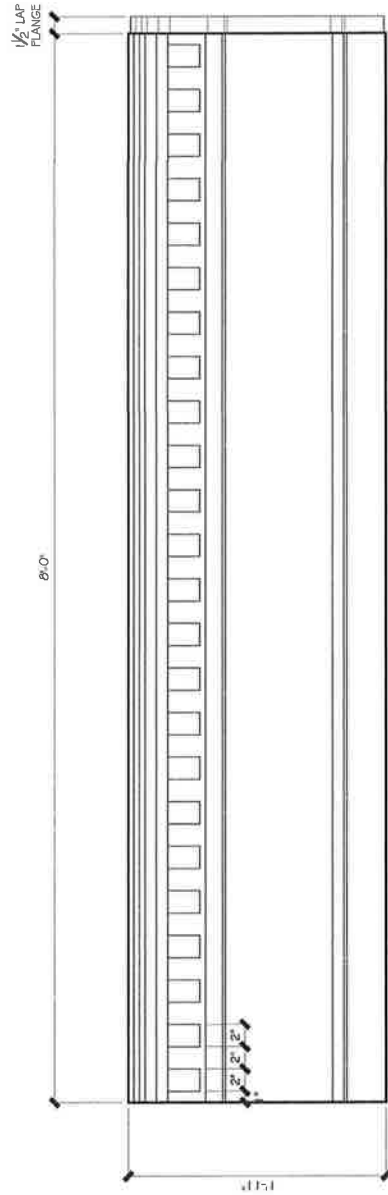
FRP Classic exterior cornice and architectural elements can be supplied for application of field finishes, and are offered prefinished with a smooth one color gelcoat, or may be textured to and prefinished to simulate stone or masonry. Stone textured and sandblasted gelcoats mature similarly to natural stone making them an ideal product for elevated applications where the appearance and aging characteristics of stone is desired but without the excessive weight of natural stone.

### *Free Consultation on the Your Ideal Exterior Fiberglass Cornice*

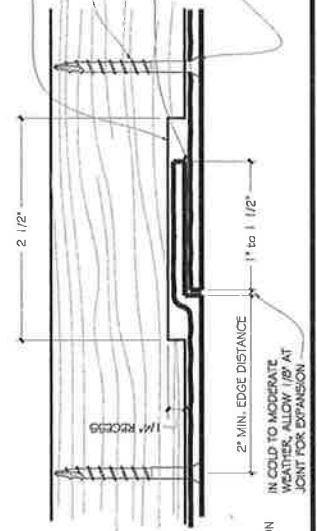
Ask your sales representative for more information on our inventory of over 200 standard FRP Classic cornice profiles to reduce your tooling costs. For a free consultation and quotation, contact one of our experienced Architectural Products Consultants at 800-963-3060.



125 W. MAIN ST.



ATTACHMENT FRAMING TO BE RECESSED OR NOTCHED @ LAP JOINTS (TYP.).  
 #7 COUNTERSUNK STAINLESS STEEL TRIM HEAD SCREWS (AVAILABLE THROUGH EDON)  
 APPLY ADHESIVE / SEALANT, COLOR MATCHED OR PAINTABLE IF DESIRED, TO LAP JOINT PRIOR TO INSTALLATION (SEALANT'S SUPPLIED BY INSTALLER)  
 USE COLOR COATED SCREWS AS SUPPLIED BY MELTON. IF CONCEALED SCREWS ARE USED, SEALANT TO APPLY A SKIM COAT OF COLORED CAULK TO EACH SCREW HEAD (TYP.).



NOTE:  
 CORNICE IS INTENDED TO BE INSTALLED USING OUTSIDE FINISH MATERIALS. A PROPERLY INSTALLED AND SCREW SYSTEM AS PROVIDED IN THE MELTON SAMPLE PACK, ALL BLOCKING, FASTENERS AND SEALANTS TO BE PROVIDED BY INSTALLER.

MC-23	<b>Melton Classics</b> Incorporated
SUBJECT	MC-23 CORNICE DETAILS
PROJECT	STANDARD CORNICES
CONTRACTOR	MELTON CLASSICS INCORPORATED
DRAWN BY: JCH	DATE: 1/5/09





RLM SIGN LIGHTING

## HAND MADE. AMERICAN MADE.

Distinguishing commercial buildings from any neighboring properties, our vintage-inspired sign lights carry a charming style and practical purpose. Commonly used to accentuate outdoor logos and branding, these angle shades are also installed indoors to highlight menu boards and other interior features. Handcrafted and fully customizable, the fixtures in our Angle Shade Series match any commercial look.

**Made in the USA**  
Available in LED  
Triac Dimmable

**Custom Designs Available**  
Multiple Gooseneck Arms  
Porcelain Finishes

**Quick Ship**  
Short Lead Times



**BARN LIGHT**  
USA





REV 07.10.17  
**SL SERIES**  
BARN LIGHT RLM SIGN LIGHTING  
Max Weight: 10.0 lbs

PROJECT NAME \_\_\_\_\_

PROJECT TYPE \_\_\_\_\_

SPS-0082

Notes:

BLE -

Example: **A** **B** **C** **D** **E** **F** **G** **H** **I** **J** **K** **L**  
G ASL11 300 CGG 975 HCR G22 HDBP NA 975 LED11 2700

**NOTES:** (1) Guard and Glass option not available (2) Guard/Glass options reduces incandescent wattage to 100W Max, GU-24 Bi-Pin to 18W Max and LED Max to 1600 Lumens (3) Not available in Natural Finishes (4) Not available in LED (5) Not available in Porcelain Finishes

#### A - MODEL

**G** Gooseneck

#### B - SHADE

##### ELLIPTICAL:

**ASL9**<sup>1,3,4,5</sup>  
**ASL11**<sup>1,3,4,5</sup>  
**ASL13**<sup>1,3,4,5</sup>  
**ASL15**<sup>1,3,4,5</sup>

##### EMBLEM/REGALIA:

**ASE8**<sup>1,4</sup>  
**ASE10**<sup>1</sup>  
**ASE12**<sup>2</sup>  
**ASE14**<sup>2</sup>

##### FRONTIER/FIRE CHIEF:

**ASFC8**<sup>1,4</sup>  
**ASFC10**<sup>1</sup>  
**ASFC12**<sup>2</sup>  
**ASFC14**<sup>2</sup>

#### C - SHADE FINISH

See Pages 3-4 for Swatches

##### POWDER COAT FINISHES:

**100** Black  
**105** Textured Black  
**200** White  
**300** Dark Green  
**307** Emerald Green  
**370** Mint  
**380** Chartreuse  
**390** Teal  
**400** Barn Red  
**420** Orange  
**470** Watermelon  
**480** Blush Pink  
**490** Magenta  
**500** Buttery Yellow  
**570** Sunflower  
**600** Bronze  
**601** Chocolate  
**605** Rust  
**615** Oil-Rubbed Bronze  
**700** Royal Blue  
**705** Navy  
**800** Industrial Grey  
**805** Charcoal Granite  
**975** Galvanized

##### PORCELAIN FINISHES:

**150** Black  
**250** White  
**350** Vintage Green  
**355** Jade  
**455** Cherry Red  
**550** Yellow  
**650** Bronze  
**750** Cobalt Blue  
**765** Delphite Blue  
**850** Graphite  
**950** Metallic Chrome

##### NATURAL FINISHES:

**995** Raw Copper  
**996** Weathered Copper  
**999** Oil-Rubbed Copper

#### D - SHADE ACCESSORY

**NA** None  
**CGG** Cast Guard and Glass<sup>2</sup>  
**WGG** Wire Guard and Glass<sup>2</sup>  
**TGG** Heavy Duty Cast Guard and Glass<sup>2</sup>  
**WC** Wire Cage

#### E - ACCESSORY COLOR

(1) See **Section C** for Finish Options

(2) If Porcelain Finish selected for accessory, accessory will be Painted-to-Match.

#### F - GLASS OPTION

**NA** Not Applicable  
**CLR** Clear Glass  
**FST** Frosted Glass  
**RIB** Ribbed Glass  
**CCR** Clear Crackle Glass  
**SMK** Smoke Crackle Glass  
**HCR** Honey Crackle Glass

#### G - MOUNTING

See Pages 5-7

##### GOOSENECK OPTIONS:

<b>G1</b> <sup>3</sup>	<b>G16</b> <sup>3</sup>
<b>G2</b> <sup>3</sup>	<b>G17</b> <sup>3</sup>
<b>G3</b> <sup>3</sup>	<b>G19</b> <sup>3,4</sup>
<b>G4</b> <sup>3</sup>	<b>G22</b>
<b>G5</b> <sup>3</sup>	<b>G24</b>
<b>G6</b> <sup>3</sup>	<b>G25</b> <sup>3</sup>
<b>G7</b> <sup>3</sup>	<b>G26</b> <sup>3</sup>
<b>G8</b> <sup>3</sup>	<b>G32</b>
<b>G9</b> <sup>3</sup>	<b>G34</b> <sup>3</sup>
<b>G10</b> <sup>3</sup>	<b>G35</b> <sup>3</sup>
<b>G11</b> <sup>3</sup>	<b>G36</b> <sup>3</sup>
<b>G12</b> <sup>3</sup>	<b>G40</b> <sup>3,4</sup>
<b>G13</b> <sup>3</sup>	<b>G64</b> <sup>3</sup>
<b>G14</b>	<b>G65</b> <sup>3</sup>
<b>G15</b>	

#### H - MOUNTING ACCESSORY

**NA** Not Applicable  
**HDBP** Heavy Duty Backing Plate<sup>3,4</sup>  
**DD** Dusk-to-Dawn Photocell<sup>4</sup>  
**DBPC** Decorative Backing Plate Cover  
**DCHX** Decorative Backing Plate Cover & Hex Cover  
**LDCHX** LED Decorative Backing Plate Cover & Hex Cover

#### I - SWIVEL KNUCKLE

**NA** None  
**SWK** Swivel Knuckle

#### J - MOUNTING COLOR

NOTES:

(1) See **Section C** for Finish Options

(2) If Porcelain Finish selected for mounting option, mounting will be a Paint-to-Match powder coat option

#### K - LIGHT SOURCE

**LED11** 11W LED, 850 LM<sup>1</sup>  
**LED16** 16W LED, 1250 LM<sup>1</sup>  
**LED16.8** 16W LED, 1600 LM<sup>2</sup>  
**LED27** 27W LED, 2000 LM<sup>1</sup>  
**E26** 200 Watt Max<sup>2</sup>  
**GU24** 24 Bi-Pin, 23W Max<sup>2</sup>

#### L - COLOR TEMPERATURE

\*Only applicable if LED light source chosen. Use NA if non LED source chosen

**NA** Not Applicable  
**2700** 2700 K  
**3500** 3500 K  
**4000** 4000 K

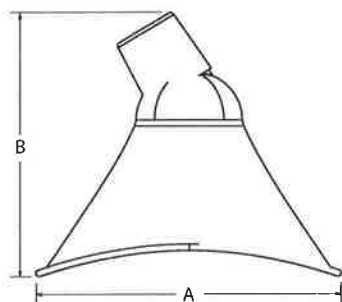


**B – SHADES**

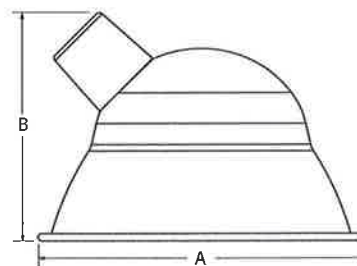
All angle shades are constructed in our Titusville, Florida-based manufacturing facility. Beginning as a flat piece of metal, each shade is spun and carefully worked into its necessary shape. This entire process is completed by hand, giving our angle shades an unmatched quality and attention to detail. The edges are rolled, and the resulting shade is highly durable and stylish. 1100-0 Aluminum — ranging from 0.050" to 0.125" — is used for many shade styles. Our galvanized steel option is crafted from 20 Ga Sheet Metal. Copper products are spun from 0.032" 110 Soft Alloy.

**ELLIPTICAL**

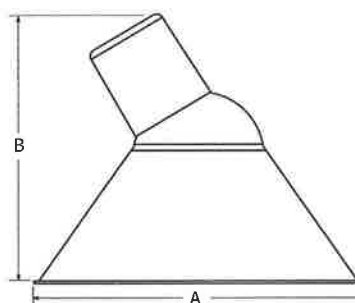
	Diameter A	Height B
<b>ASL9</b>	7.75"	7.5"
<b>ASL11</b>	8.5"	9.5"
<b>ASL13</b>	11.75"	10"
<b>ASL15</b>	13.25"	11.75"

**EMBLEM/REGALIA**

	Diameter A	Height B
<b>ASE8</b>	8"	6.25"
<b>ASE10</b>	10.25"	7.25"
<b>ASE12</b>	10.25"	8.5"
<b>ASE14</b>	14.25"	9.5"

**FRONTIER/FIRE CHIEF**

	Diameter A	Height B
<b>ASFC8</b>	8"	6.25"
<b>ASFC10</b>	10.25"	7.25"
<b>ASFC12</b>	12.25"	8.5"
<b>ASFC14</b>	14.25"	9.5"

**C – SHADE FINISH**

All steel angle shades are coated with a durable porcelain enamel finish, which fuses to the metal in a high-temperature oven. The aluminum shades are sprayed with one of numerous powdercoat colors. Optional "Weathered" and "Oil Rubbed" finishes are available to the copper angle shades, or the metal can be left raw.

Coating shades with porcelain enamel dates back to the earliest lighting manufacturers, but this process eventually fell out of favor when companies began mass producing their fixtures. Drawn to this material because of its unmatched durability, we revived the use of porcelain in our fixtures. Three layers of porcelain are applied to our handmade steel shades, providing additional protection not found in other options. Along with its many years of service and bright finish colors, porcelain is easily cleaned with soap and water.

**PORCELAIN FINISHES**

**C - SHADE FINISH (CONTINUED)**

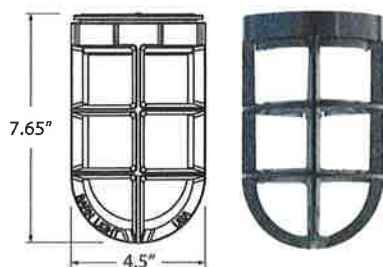
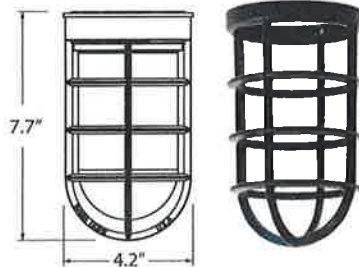
Similar to the other stages in our manufacturing process, we apply the powdercoat finish by hand. Ranging from bright and lively options to more subdued colors, there's a finish matching any space's needs. Select shades are available with the "Paint to Match" option, which replicates the colors of our porcelain finishes. The powdercoat is durable, able to withstand installation in outdoor settings and high traffic commercial venues.

**POWDERCOAT FINISHES**

Available in copper, these shades show off the natural look of this elegant metal. Handspun from solid metal, these shades are constructed with careful attention to detail. The raw copper develops into a patina in time, but with regular care, the shade maintains its initial glistening surface. Copper is offered with three finish options, which are intended enhance the metal's natural charms.

**NATURAL FINISHES****D - SHADE ACCESSORY**

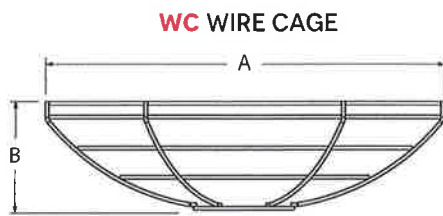
Several optional decorative — yet functional — accessories are available to these shades. Three guard styles — ranging from a "heavy duty" option to a thinner, lightweight wire guard — enclose the bulb itself.

**TGG HEAVY DUTY GUARD & GLASS****CGG CAST GUARD & GLASS****WGG WIRE GUARD & GLASS**



**D - SHADE ACCESSORY (CONTINUED)**

Our decorative wire cage attaches to the shade's outer brim.

**WC WIRE CAGE**

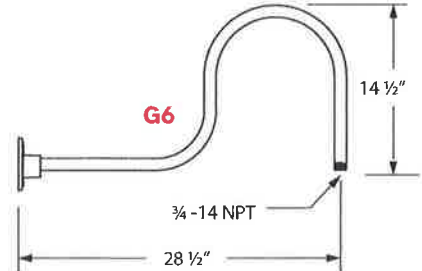
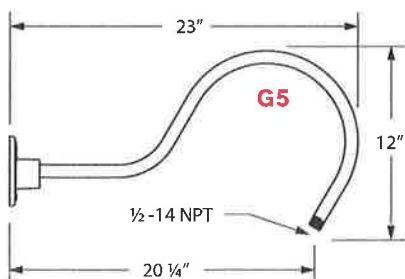
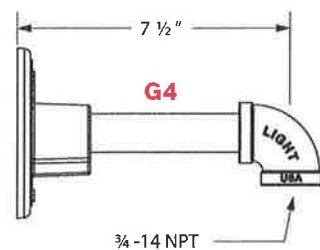
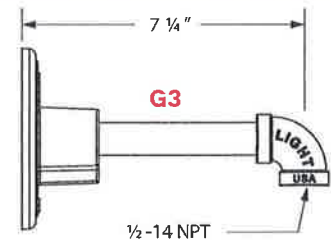
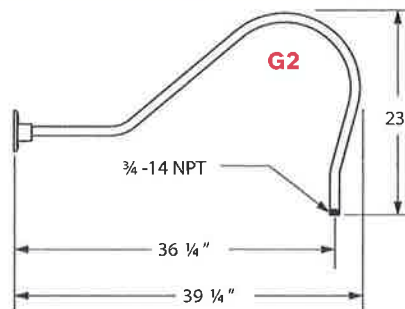
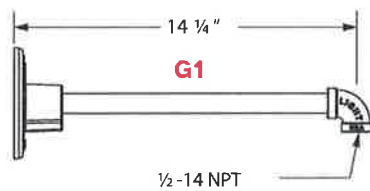
Diameter A	Height B
8"	2.7"
10"	2.9"
11"	3.2"
12"	3.4"
13"	3.7"
14"	3.9"
15"	4.2"

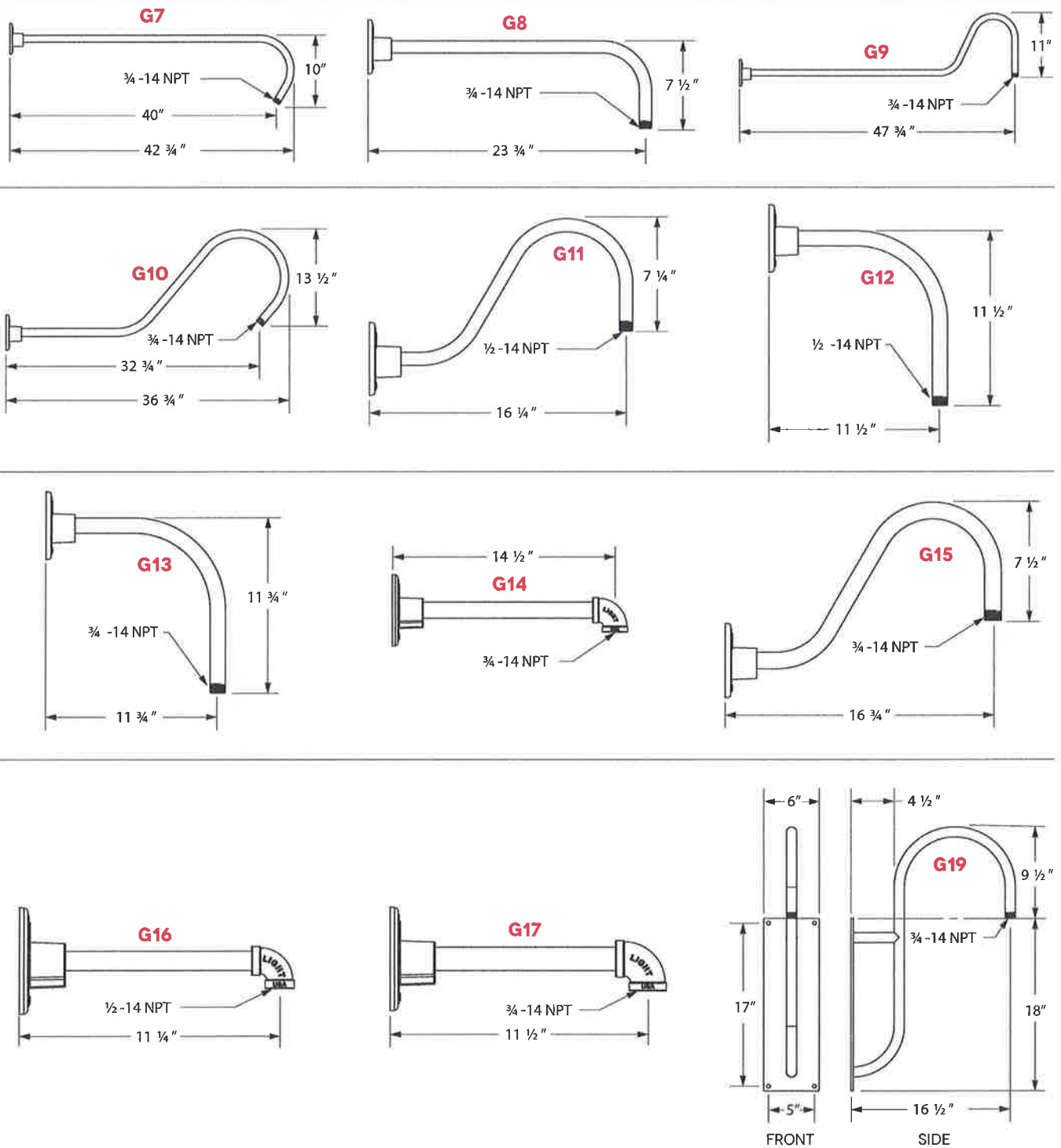
**F - GLASS OPTION**

A glass jelly jar is inserted into the guard to complete the fixture's look. Six different styles are available for the glass.

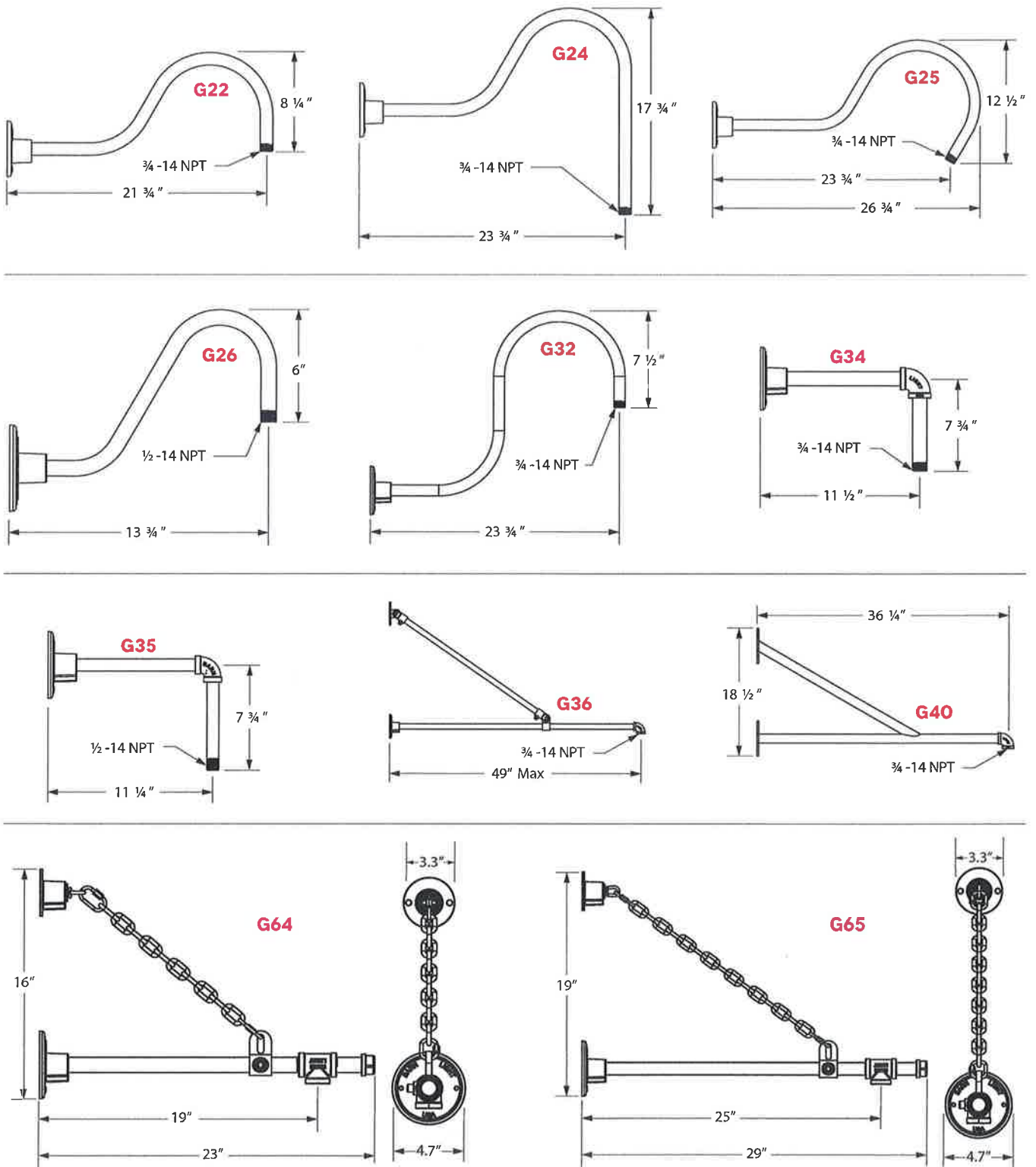
**CLR** CLEAR**FST** FROSTED**RIB** RIBBED**CCR** CLEAR CRACKLE**SMK** SMOKE CRACKLE**HCR** HONEY CRACKLE**G - MOUNTING**

An array of angles and styles are offered to help the sign light adapt to any space's individual requirements.

**GOOSENECKS**

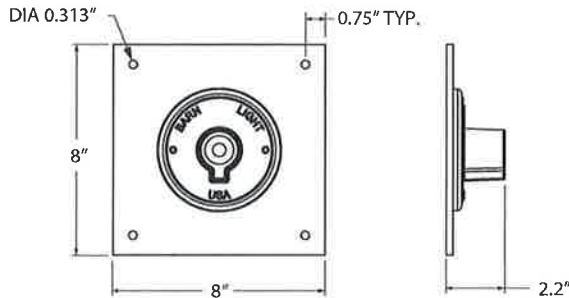
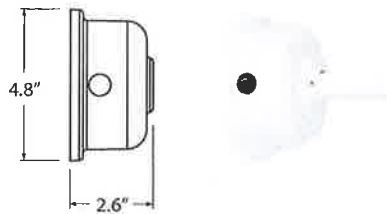
**G - MOUNTING (CONTINUED)****GOOSENECKS (CONTINUED)**



**G - MOUNTING (CONTINUED)****GOOSENECKS (CONTINUED)**

**H - MOUNTING ACCESSORY**

The various backing plate options help the mounting meet the specific needs of any location.

**HDBP HEAVY DUTY WALL BACKING PLATE****DCHX DECORATIVE BACKING PLATE COVER & HEX COVER  
LDCHX FOR LED VERSION (NOT PICTURED)****DD DUSK TO DAWN PHOTOCELL****I - SWIVEL KNUCKLE****SWK SWIVEL KNUCKLE****K - LIGHT SOURCE**

All published luminaire photometric testing performed to IESNA LM-79-08 standards by a NVLAP accredited laboratory. Data is considered to be representative of the configurations shown, within the tolerances allowed by Lighting Facts. To obtain an IES file specific to your project, please contact the factory.

OPTION	WATTAGE	LUMENS	CRI	VOLTAGE	DIMMING
<b>LEDs</b>					
<b>LED11</b>	11W	850	>90	120 VAC	TRIAC
<b>LED16</b>	16W	1250	>90	120 VAC	TRIAC
<b>LED16.8</b>	16W	1600	>90	120 VAC	TRIAC
<b>LED27</b>	27W	2000	>90	120-277 VAC	0-10V
<b>INCANDESCENT (MED E26)</b>					
<b>E26</b>	200W Max	1400	100	120 VAC	Bulb Dependant
<b>COMPACT FLOURESCENT (GU24 CFL)</b>					
<b>GU24</b>	23W Max	1400	75	120 VAC	Bulb Dependant

**LED MODULE SPECIFICATION:**

COLOR RENDERING INDEX: >90 CRI  
AVAILABLE CCT: 2700K, 3500K, 4000K

LUMEN MAINTENANCE (L70): 50,000 HOURS





## New Construction LBP6

LED Downlight 800-1500 Lumens  
120-277V AC  
0-10V/ Triac/ ELV Dimming  
800/1100 IC Rated  
1500 Non-IC Rated



# LiteBox Plus+ 6"

Aperture: Nominal 6"

Ceiling Cutout: 6 7/8"

Maximum Ceiling Thickness: 1 1/2"

For conversion to millimeters,  
multiply inches by 25.4

Not to Scale

### APPLICATIONS:

LiteBox Plus LED modules are designed for use in new construction Prescolite LBP6 recessed housings. Three lumen output levels that are comparable to 26 and 32 watt CFL, while consuming only 10-20 watts respectively. Suitable for use with continuous room side ambient temperature up to 25°C. Flicker-free dimming to 1% with most standard dimmers. (See Dimming Notes).

### HOUSING:

Galvanized steel housing with full wraparound plaster frame. Housing adjusts from 1/2" to 1- 1/2" thick ceiling. Notched mounting frame for easy alignment. Housing includes universal J-box with snap-out sides, 1/2" and 3/4" knock outs for rigid or BX fittings. Removable housing can for field inspection of wiring. Installation uses Pro-Nail™ bar hangers with integral nail compatible with joist systems and materials. Joist alignment tab for rapid and consistent positioning and convenient nail removal features for easy re-positioning. Integral snap-on T-bar grip-lock feature and rigid 24" telescoping bar hanger design. Auxiliary mounting points for additional fasteners or wire suspension to structure. Bar hangers are captive with positive extension stop and locking feature to fix position, and can be reoriented 90° to housing.

### LIGHT ENGINE:

High efficacy LED light engine, 2700K to 4000K, 90 CRI, integrated with durable aluminum heat sink for excellent thermal management. System designed for optimal life and lumen maintenance (60,000 hours at 70% lumen maintenance per TM-21).

### LENS/REFLECTOR:

All LiteBox Plus LED modules are provided standard with a diffused optical grade acrylic lens for uniform illumination and superior glare control. Reflector options include clear anodized and powder coat finishes which create aesthetic ceiling appearance and visually comfortable 55° cutoff.

### LED DRIVER/DIMMING:

Integral high efficiency LED driver 120-277V 50/60Hz with >0.9 power factor. The driver is compatible with 120 through 277 input voltage, as well as either 0-10V low voltage control or 120V Triac control. Either option is selectable at the J-Box. Dimming from 100% to 1% with select dimmers. (See Dimming Notes for recommended dimmers.) Output over-voltage, over-current, and short circuit protection. Life expectancy of 60,000 hours minimum at recommended ambient temperatures.

### INSTALLATION:

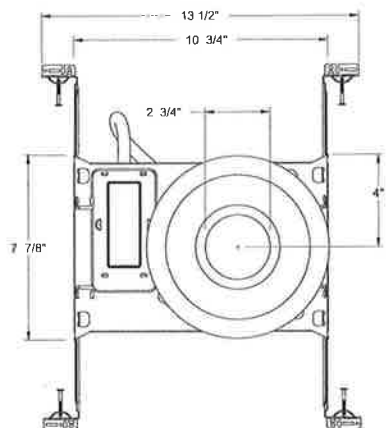
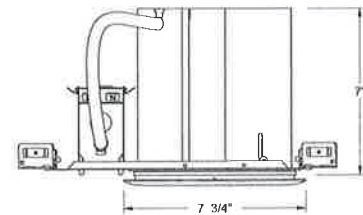
For New Construction: Use with Prescolite LBP6 LED housings. Quick connector mates directly to housing connector without a screw base adapter for California Title 24 compliance. Rapid installation of trim with driver quick connect system, and standard retention springs.

### CERTIFICATIONS:

CSA certified to US and Canadian safety standards. Suitable for wet locations. Approved for through wiring. The 8L and 11L output options are IC rated. The 15L option is non-IC rated. ENERGY STAR qualified and can be used to comply with California Title 24 non-residential usage.

### WARRANTY:

5 year warranty  
See [www.prescolite.com](http://www.prescolite.com) for details.



See page 3 for trim/CP lineart.

CATALOG NUMBER:

EXAMPLE: LBP6-6LBP15L30KWH

HOUSING	TRIM	OUTPUT	LED COLOR	CRI	TRIM COLOR	TRIM OPTIONS	ACCESSORIES
<input type="checkbox"/> <b>LBP6</b> 6" LED Housing <input type="checkbox"/> <b>LBP6CP</b> 6" LED Chicago Plenum Housing	<input type="checkbox"/> <b>6LBP</b> 6" LED Downlight 120-277V	<input type="checkbox"/> <b>8L</b> 800 Lumen <input type="checkbox"/> <b>11L</b> 1100 Lumen <input type="checkbox"/> <b>15L<sup>2</sup></b> 1500 Lumen	<input type="checkbox"/> <b>27K</b> 2700 Kelvin <input type="checkbox"/> <b>30K</b> 3000 Kelvin <input type="checkbox"/> <b>35K</b> 3500 Kelvin <input type="checkbox"/> <b>40K</b> 4000 Kelvin	<input type="checkbox"/> <b>Blank</b> 90+ CRI	<input type="checkbox"/> <b>WH</b> White <input type="checkbox"/> <b>AZ</b> Clear Anodized <input type="checkbox"/> <b>BL</b> Black <input type="checkbox"/> <b>Z</b> Zet	<input type="checkbox"/> <b>Blank</b> Downlight <input type="checkbox"/> <b>WW<sup>3</sup></b> Wall Wash	<input type="checkbox"/> <b>UFO-LED25<sup>1</sup></b> Dual-Lite 25 Watt Recessed Mounted Battery Back Up

#### NOTES:

- 1 See [www.dual-lite.com/products/ufoled25](http://www.dual-lite.com/products/ufoled25) for details.
- 2 15L option is Non-IC rated.
- 3 WW kicker color will be white regardless of trim color



An Division of Hubbell Lighting, Inc.

In a continuing effort to offer the best product possible we reserve the right to change, without notice, specifications or materials that in our opinion will not alter the function of the product.  
Web: [www.prescolite.com](http://www.prescolite.com) • Tech Support: (888) 777-4832

LBP-LED-001

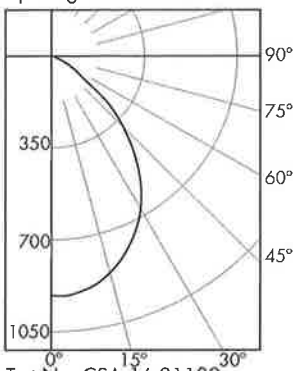
# PHOTOMETRIC DATA **Litebox Plus LED - 6" LED Downlight and Wall Wash**

ELECTRICAL DATA	6LBP15L	6LBP15LWW	6LBP11L	6LBP11LWW	6LBP8L	6LBP8LWW
INPUT VOLTAGE	120-277V					
INPUT FREQUENCY	50/60Hz					
INPUT CURRENT 120V	0.17A	0.17A	0.10A	0.10A	0.09A	0.09A
INPUT CURRENT 277V	0.07A	0.07A	0.04A	0.04A	0.04A	0.04A
INPUT POWER	20.2W	20.2W	12.0W	12.0W	10.4W	10.4W
CONSTANT CURRENT OUTPUT	500mA	500mA	300mA	300mA	250mA	250mA
DELIVERED LUMENS	1539	1336	1050	936	808	712
EFFICACY (LUMENS PER WATT)	76.2	66.1	87.5	78.0	77.7	68.5
POWER FACTOR	>0.90					
THD	<20%					
EMI FILTERING	FCC 47CFR Part 15, Class B (120V) Class A (277V)					
OPERATING TEMPERATURE	-30°C to 25°C		-30°C to 35°C		-30°C to 35°C	
DIMMING	0-10V & TRIAC (See Dimming Notes for more information)					

Over-voltage, over-current, short circuit protected

## LBP6 6LBP15L30KWH

LED Light Engine: 3000K 92 CRI  
System Wattage: 20.2  
Fixture delivered lumens: 1539  
Fixture Efficacy: 76.2  
Spacing Criteria: 1.1



Test No. CSA 16.01180

Tested at 25°C Ambient in accordance to IESNA LM-79-2008

### CANDELA DISTRIBUTION

DEG	CANDELA
0	912
5	911
15	855
25	742
35	584
45	381
55	144
65	53
75	12
85	4
90	0

Single Unit, Initial Footcandles, 30" Work Plane						Ceiling to Floor Height (ft)		Multiple Units, Initial Footcandles, 30" Work Plane			
Nadir	10"	20"	30"	40"	50"			Spacing is Maximum Over Work Plane, SMH= 1.1			
FC	FC Dia (ft)	FC Dia (ft)	FC Dia (ft)	FC Dia (ft)	FC Dia (ft)			Fixture Spacing (ft)	RCR 2	RCR 5	RCR 7
74	67	1	52	3	33	4	6	4.0	95	72	60
30	27	2	21	4	13	6	8	6.0	39	29	24
14	13	3	10	6	6	9	10.5	9.0	18	14	12

### ZONAL LUMEN SUMMARY

ZONE	LUMENS	%LUMINAIRE
0-30	668	43.4%
0-40	1031	67.0%
0-60	1467	95.3%
0-90	1539	100.0%

### COEFFICIENTS OF UTILIZATION

#### Zonal Cavity Method

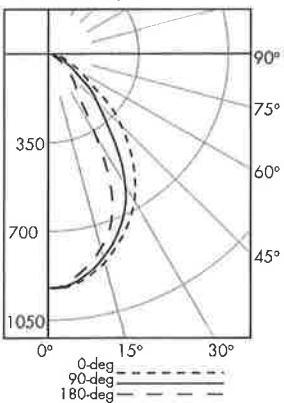
Room Cavity Ratio	% Effective Ceiling Cavity Reflectance											
	80%			70%			50%			30%		
	20% Effective Floor Cavity Reflectance											
	% Wall Reflectance											
	70	50	30	10	70	30	50	30	50	30		
1	112	108	105	102	109	103	102	100	98	96		
3	97	89	82	77	95	81	85	80	82	78		
5	84	74	66	61	82	66	71	65	69	63		
7	74	62	55	49	72	54	60	53	58	53		
9	65	53	46	41	64	46	51	45	50	45		

LBP6 6LBP15L30KWH

Test No. CSA 16.01180

## LBP6 6LBP15L30KWHWW

LED Light Engine: 3000K, 92 CRI  
System Wattage: 20.2W  
Fixture Delivered Lumens: 1336  
Fixture Efficacy: 66.1



Test No. 16.01062

Tested at 25°C Ambient in accordance to IESNA LM-79-2008

### CANDELA DISTRIBUTION

DEG	0	90	180
0	923	923	923
5	920	914	903
15	852	831	794
25	736	696	575
35	583	475	209
45	401	268	129
55	194	134	69
65	105	66	28
75	59	29	18
85	6	3	6
90	0	0	0

### LUMINANCE DATA IN CANDELA/SQ. METER

Angle in Vertical	0 DEG	90 DEG	180 DEG
45°	31077	20770	9997
55°	18535	12803	6592
65°	13615	8558	3631
75°	12492	6140	3811
85°	3773	1886	3773

					MULTIPLE UNITS	
⊕	1'	2'	3'	4'	UNITS ON 3' CENTER	UNITS ON 4' CENTER

### 3' DISTANCE FIXTURE MOUNTED OUT FROM WALLS

FOOTCANDLE DISTRIBUTION ON WALL SURFACE											
1	6	5	3	2	1	10	9	10	8	7	8
2	12	10	6	3	1	18	16	18	15	12	15
3	16	14	9	4	2	25	26	25	20	19	20
4	13	12	9	5	3	26	25	26	20	19	20
5	10	9	7	5	3	23	23	22	17	17	17
6	7	7	6	4	3	19	19	19	14	14	14
7	5	5	4	3	2	15	15	15	12	12	12
8	4	4	3	2	2	13	13	12	10	10	10
9	3	3	2	2	2	10	10	10	8	8	8

LBP6 6LBP15L30KWHWW

Test No. 16.01062

### NOTES

Refer to [www.prescolite.com](http://www.prescolite.com) for additional photometric tests (IES Files).



Web: [www.prescolite.com](http://www.prescolite.com) • Tech Support: (888) 777-4832  
701 Millennium Boulevard • Greenville, SC 29607 U.S.A. • Phone (864) 678-1000  
Copyright ©2017 Prescolite, Inc., a division of Hubbell Lighting, Inc. All Rights Reserved  
Specifications subject to change without notice. • Printed in U.S.A. • LBP-LED-001 • 1/3/17

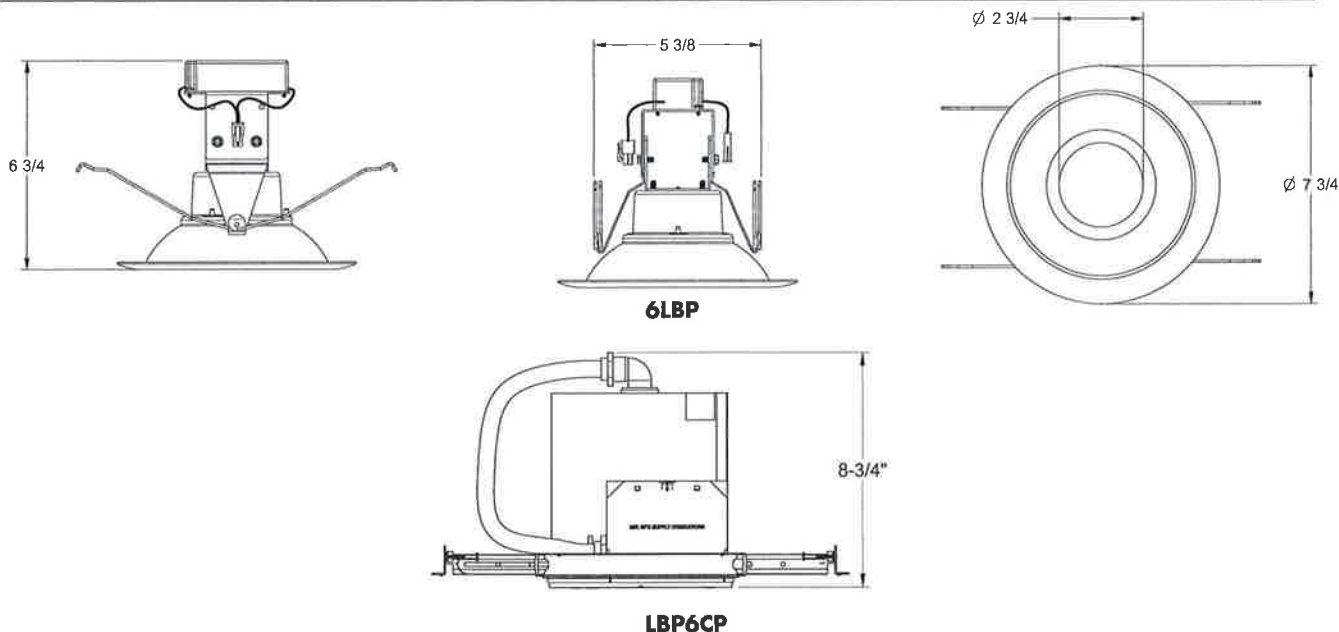


**HUBBELL**  
Lighting, Inc.



# PHOTOMETRIC DATA

## Litebox Plus LED - 6" LED Downlight and Wall Wash



### DIMMING NOTES:

LiteBox Plus LED modules are designed to be compatible with many dimmer controls. Incandescent type dimmers are not recommended. The following is a list of known compatible dimmer controls:

#### ELV DIMMERS

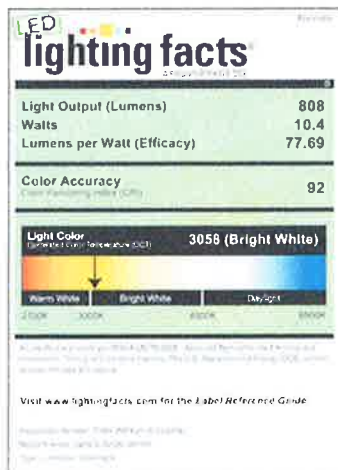
Manufacturer	Part Number
Lutron	Diva Series DVELV-300
Leviton	Renior II AWRMG-EAW

#### 0-10V DIMMERS

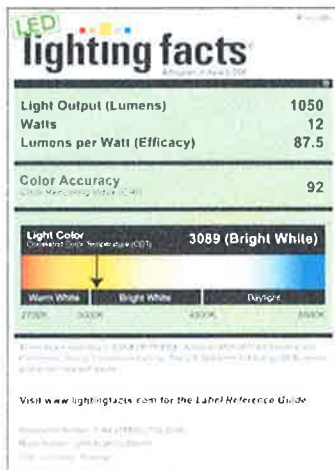
Manufacturer	Part Number
Lutron	NTFTV
Leviton	AWSMT-7
Wattstopper	ADF-120277

Dimming capabilities will vary depending on the dimmer control, load, and circuit installation. Always refer to dimmer manufacturer instructions or a controls specialist for specific requirements.

Dimmer control brand names where identified above are trademarks or registered trademarks of each respective company.



6LBP8L



6LBP11L



6LBP15L



Web: [www.prescolite.com](http://www.prescolite.com) • Tech Support: (888) 777-4832  
 701 Millennium Boulevard • Greenville, SC 29607 U.S.A. • Phone (864) 678-1000  
 Copyright ©2017 Prescolite, Inc., a division of Hubbell Lighting, Inc. All Rights Reserved  
 Specifications subject to change without notice. • Printed in U.S.A. • LBP-LED-001 • 1/3/17



**HUBBELL**  
Lighting, Inc.

# LED ALF FLOOD FAMILY

Cat.#

Job

Type



**HUBBELL**  
Outdoor Lighting

Approvals

## SPECIFICATIONS

### Intended Use:

ALF is excellent for small floodlighting applications such as signs, façade, landscape accent or small area illumination. The compact, low profile size allows the flood to be easily hidden or blend into the landscape environment.

### Construction:

- Low copper extruded aluminum construction provides long life in outdoor ground mounted applications. Ribbed design adds styling while dissipating LED and driver heat, providing longer component life.
- Tempered and impact resistant glass lens with decorative silk screen seals to housing with silicone gasket
- Dark Bronze powder paint finish provides durable and lasting appearance

### Optics/Electrical

#### LED:

- Six or twelve LEDs produce 905 or 1913 lumens at 5000K
- Wide 6 x 5 beam spread covers three times the set back distance with uniform light
- Universal voltage driver is 120-277V\*, 50/60hz, with 10.1 input watts (ALF-6LU) 21.4 input watts (ALF-12LU)

\*In Canada, ALF should be used for voltages 120-240 only

### Installation:

- Knuckle mount: Universal ½" swivel knuckle has serrated teeth for sure aiming. Knuckle threads are brass insuring quality installation and corrosion resistance
- Wall mount: Cast aluminum cover/quick mount plate and universal adapter allows easy installation to 3-½" or 4" standard junction boxes

### Listings:

Listed to UL 1598 for use in wet locations

- ALF-6 IP65 • ALF-12 IP64

### Warranty:

Five year limited warranty (for more information visit: <http://www.hubbelloutdoor.com/resources/warranty/>)

## PRODUCT IMAGE(S)



ALF 6 LED KNUCKLE MOUNT

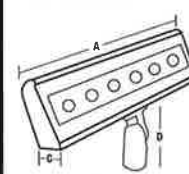


ALFW 6 LED WALL MOUNT

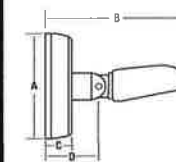
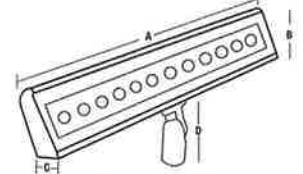


ALF 12 LED KNUCKLE MOUNT

## DIMENSIONS



A	B	C	D
12/24"	3 1/2"	1 1/2"	3 1/2"
305/609.6 mm	89 mm	38 mm	89 mm



A	B	C	D
5 1/2"	6 1/2"	1 1/8"	2 1/8"
139 mm	165 mm	28 mm	54 mm

## CERTIFICATIONS/ LISTINGS



**IP64**  
**IP65**

## SHIPPING INFORMATION

Catalog Number	G.W(kg)/ CTN	Carton Dimensions			Carton Qty. per Master Pack
		Length Inch (cm)	Width Inch (cm)	Height Inch (cm)	
ALF-6LU	9.7 (4.4)	18.5 (47)	14.3 (36.5)	5.7 (14.5)	2
ALFW-6LU-PC	11.4 (5.2)	18.5 (47)	14.3 (36.5)	5.7 (14.5)	2
ALF-12LU	6.5 (2.97)	24.8 (63)	8.8 (22.5)	3.14 (8)	1

## ORDERING INFORMATION

ORDERING EXAMPLE: ALF-6LU-5K-BZ

Catalog Number	Wattage	Number of LEDs	Voltage <sup>1</sup>	Lumens	Life	LPW	CCT	Weight lbs. (kg)
<b>1/2" KNUCKLE MOUNT</b>								
ALF-6LU-5K-BZ	10.1	6	120-277V	905	50,000 hrs	90	5000K	4.0 (1.8)
ALF-12LU-5K-BZ	21.4	12	120-277V	1913	50,000 hrs	89	5000K	8.0 (3.6)
<b>WALLMOUNT</b>								
ALFW-6LU-5K-BZ-PC	10.7	6	120V	510	50,000 hrs	48	5000K	4.5 (2.0)

<sup>1</sup> Unit should not be used above 240V in Canada



**HUBBELL**  
Outdoor Lighting

Hubbell Outdoor Lighting • 701 Millennium Boulevard • Greenville, SC 29607 • Phone: 864-678-1000

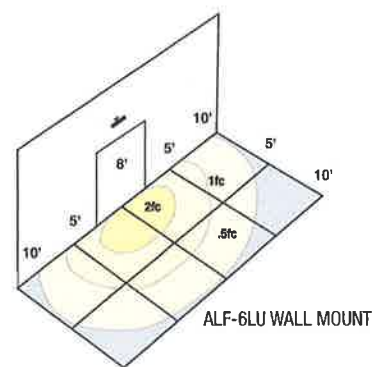
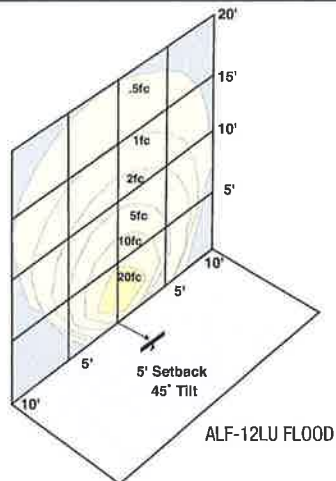
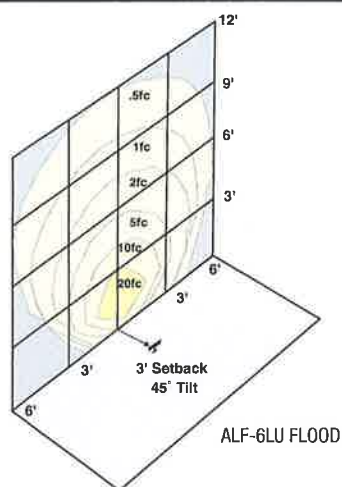
Due to our continued efforts to improve our products, product specifications are subject to change without notice.

© 2016 HUBBELL OUTDOOR LIGHTING, All Rights Reserved • For more information visit our website: [www.hubbelloutdoor.com](http://www.hubbelloutdoor.com) • Printed in USA

ALF-SPEC 5/16



## PHOTOMETRICS



## PERFORMANCE DATA

# OF LEDS	DRIVE CURRENT	CCT	LUMENS	BEAM (H X V)	LPW <sup>1</sup>
6	STD. (470mA)	5K	905	6 x 5	90
12	STD. (470mA)	5K	1913	6 x 5	89

Lumen values are from photometric tests performed in accordance with IESNA LM-79-08. Data is considered to be representative of the configurations shown. Actual performance may differ as a result of end-user environment and application.

## ELECTRICAL DATA

# OF LEDS	DRIVE CURRENT (mA)	INPUT VOLTAGE (V)	SYSTEM POWER (w)	CURRENT (Amps)	POWER FACTOR
6	STD. (470mA)	120	10.1	.09	.97
		277	12.5	.06	.78
12	STD. (470mA)	120	21.0	.18	.98
		277	25.5	.12	.78



**HUBBELL**  
Outdoor Lighting

Hubbell Outdoor Lighting • 701 Millennium Boulevard • Greenville, SC 29607 • Phone: 864-678-1000

Due to our continued efforts to improve our products, product specifications are subject to change without notice.

© 2016 HUBBELL OUTDOOR LIGHTING, All Rights Reserved • For more information visit our website: [www.hubbelloutdoor.com](http://www.hubbelloutdoor.com) • Printed in USA

ALF-SPEC 5/16

# 125-27-29 W MAIN COLOR BOARD



Sunflower Yellow  
4602-0000

AWNING AT 127

SW 7005  
**Pure White**  
Interior / Exterior  
Locator Number: 255-C1

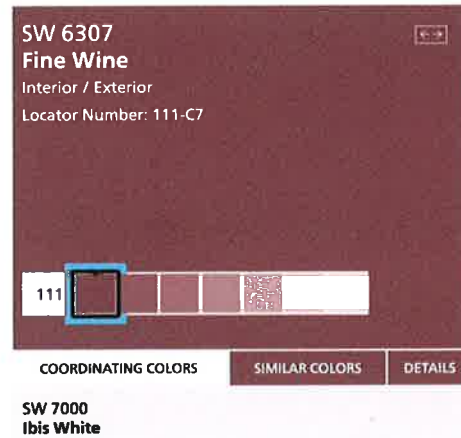
255

COORDINATING COLORS

SIMILAR COLORS

DETAILS

SW 7668  
**March Wind**



METAL AWNING SUPPORT AT 127



WOOD AT 129

FACADE AND CORNICE AT 125-127

**Corten AZP Raw® - Non Perforated**

*See Below For Available Profiles and Panel Dimensions. Also Available*



METAL ROOFING AT 129

**WHITE GLOSS**

ALUMINUM STOREFRONT AT 125 AND CANOPY

HISTORICSTREETSCAPES PLLC ARCHITECTURE